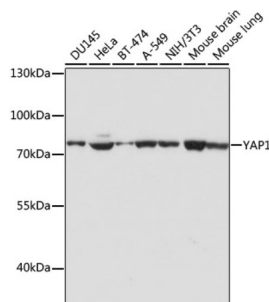
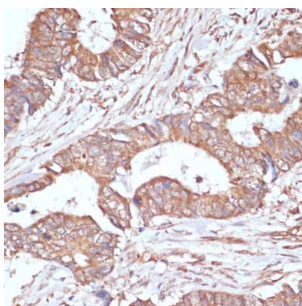


## Yes-Associated Protein 1 (YAP1) Antibody

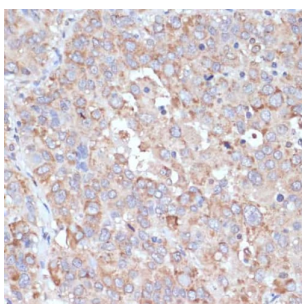
Catalogue No.: abx000954



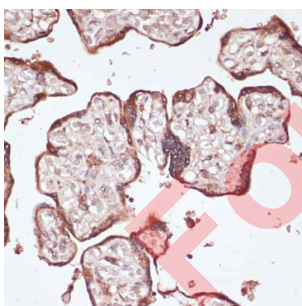
Western blot analysis of extracts of various cell lines using YAP1 Antibody (1/1000 dilution).



Immunohistochemistry of paraffin-embedded Human colon carcinoma using YAP1 Antibody (1/100 dilution, 40x lens).



Immunohistochemistry of paraffin-embedded Human liver cancer using YAP1 Antibody (1/100 dilution, 40x lens).



Immunohistochemistry of paraffin-embedded Human placenta using YAP1 Antibody (1/100 dilution, 40x lens).

YAP1 Antibody is a Rabbit Polyclonal antibody against YAP1. This gene encodes a downstream nuclear effector of the Hippo signaling pathway which is involved in development, growth, repair, and homeostasis. This gene is known to play a role in the development and progression of multiple cancers as a transcriptional regulator of this signaling pathway and may function as a potential target for cancer treatment. Alternative splicing results in multiple transcript variants encoding different isoforms. [provided by RefSeq, Aug 2013].

**Target:** Yes-Associated Protein 1 (YAP1)

# Datasheet

Version: 6.0.0  
Revision date: 25 Aug 2025



|                               |  |
|-------------------------------|--|
| <b>Clonality:</b>             | Polyclonal   |
| <b>Reactivity:</b>            | Human, Mouse, Rat  |
| <b>Tested Applications:</b>   | WB, IHC  |
| <b>Host:</b>                  | Rabbit   |
| <b>Recommended dilutions:</b> | WB: 1/500 - 1/2000, IHC-P: 1/50 - 1/200. Not tested in IHC-F. Optimal dilutions/concentrations should be determined by the end user.       |
| <b>Conjugation:</b>           | Unconjugated   |
| <b>Immunogen:</b>             | A synthetic peptide corresponding to human YAP1.   |
| <b>Isotype:</b>               | IgG  |
| <b>Form:</b>                  | Liquid   |
| <b>Purification:</b>          | Purified by affinity chromatography.   |
| <b>Storage:</b>               | Aliquot and store at -20°C. Avoid repeated freeze/thaw cycles.   |
| <b>UniProt Primary AC:</b>    | P46937 ( <a href="#">UniProt</a> , <a href="#">ExPASy</a> )  |
| <b>Gene Symbol:</b>           | YAP1   |
| <b>GeneID:</b>                | <a href="#">10413</a>  |
| <b>NCBI Accession:</b>        | NP_001123617.1   |
| <b>KEGG:</b>                  | hsa:10413  |
| <b>String:</b>                | <a href="#">9606.ENSP00000478927</a>   |
| <b>Molecular Weight:</b>      | Calculated MW: 36 kDa/48 kDa/49 kDa/50 kDa/52 kDa/53 kDa/54 kDa<br>Observed MW: 75 kDa   |
| <b>Buffer:</b>                | PBS, pH 7.3, containing 0.02% sodium azide, 50% glycerol.  |
| <b>Concentration:</b>         | 1 mg/ml  |
| <b>Note:</b>                  | THIS PRODUCT IS FOR RESEARCH USE ONLY. NOT FOR USE IN DIAGNOSTIC, THERAPEUTIC OR COSMETIC PROCEDURES. NOT FOR HUMAN OR ANIMAL CONSUMPTION. |