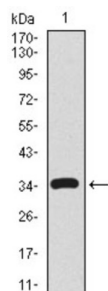
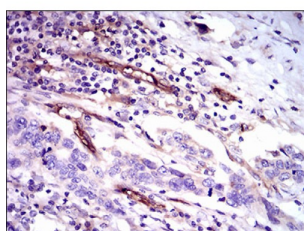


## CD59 Glycoprotein (CD59) Antibody

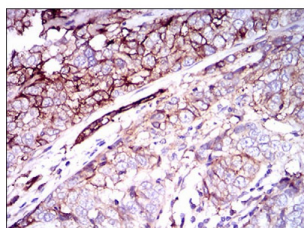
Catalogue No.: abx011952



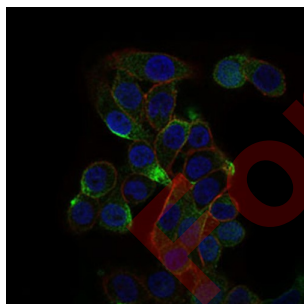
Western blot analysis using CD59 antibody against human CD59 recombinant protein. (Expected MW is 34.7 kDa).



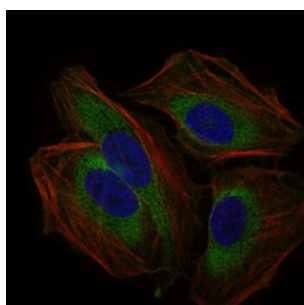
Western blot analysis using CD59 antibody against HEK293 (1) and CD59 (AA: 31-111) - hlgGfc transfected HEK293 (2) cell lysate.



Immunofluorescence analysis of MCF-7 cells using CD59 antibody (green). Blue: DRAQ5 fluorescent DNA dye. Red: Actin filaments have been labeled with AF555 phalloidin.



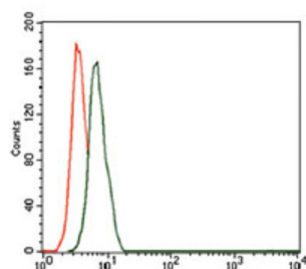
Immunofluorescence analysis of HeLa cells using CD59 antibody (green). Blue: DRAQ5 fluorescent DNA dye. Red: Actin filaments have been labeled with AF555 phalloidin.



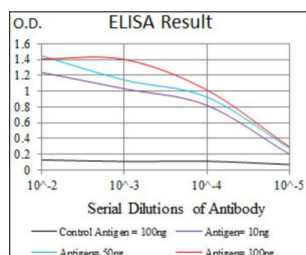
Flow cytometric analysis of HeLa cells using CD59 antibody (green) and negative control (red).

# Datasheet

Version: 2.0.0  
Revision date: 20 Jun 2025



Immunohistochemical analysis of paraffin-embedded bladder cancer tissues using CD59 antibody with DAB staining.



Immunohistochemical analysis of paraffin-embedded esophageal cancer tissues using CD59 antibody with DAB staining.

This gene encodes a cell surface glycoprotein that regulates complement-mediated cell lysis, and it is involved in lymphocyte signal transduction. This protein is a potent inhibitor of the complement membrane attack complex, whereby it binds complement C8 and/or C9 during the assembly of this complex, thereby inhibiting the incorporation of multiple copies of C9 into the complex, which is necessary for osmolytic pore formation.

**Target:** CD59 Glycoprotein (CD59)

**Clonality:** Monoclonal

**Reactivity:** Human

**Tested Applications:** ELISA, IHC, IF/ICC, FCM

**Host:** Mouse

**Recommended dilutions:** ELISA: 1/10000, IHC: 1/200 - 1/1000, IF/ICC: 1/50 - 1/200, FCM: 1/200 - 1/400. Optimal dilutions/concentrations should be determined by the end user.

**Conjugation:** Unconjugated

**Immunogen:** Purified recombinant fragment of human CD59 (AA: 31-111) expressed in E. coli.

**Isotype:** IgG<sub>1</sub>

**Form:** Liquid

**Purification:** Purified from ascites by Protein G chromatography.

# Datasheet

Version: 2.0.0  
Revision date: 20 Jun 2025



**Storage:** Aliquot and store at -20°C. Avoid repeated freeze/thaw cycles.

**UniProt Primary AC:** P13987 ([UniProt](#), [ExPASy](#))

**Gene Symbol:** CD59

**GeneID:** [966](#)

**OMIM:** [107271](#)

**HGNC:** 1689

**Ensembl:** ENSG00000085063

**Molecular Weight:** 14.2 kDa

**Buffer:** PBS, containing 0.05% sodium azide.

**Concentration:** 1 mg/ml

**Note:** THIS PRODUCT IS FOR RESEARCH USE ONLY. NOT FOR USE IN DIAGNOSTIC, THERAPEUTIC OR COSMETIC PROCEDURES. NOT FOR HUMAN OR ANIMAL CONSUMPTION.

For Reference Only