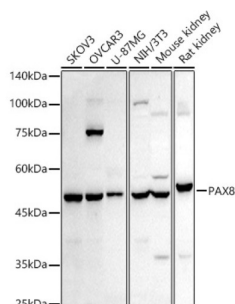


Paired Box Protein Pax-8 (PAX8) Antibody

Catalogue No.: abx000957



Western blot analysis of various lysates using PAX8 Antibody at 1/1000 dilution. Secondary antibody: HRP-conjugated Goat anti-Rabbit IgG (H+L) at 1/10000 dilution. Lysates/proteins: 25 µg per lane. Blocking buffer: 3% nonfat dry milk in TBST. Exposure time: 180s.

PAX8 Antibody is a Rabbit Polyclonal antibody against PAX8. PAX8 is a member of the paired box (PAX) family of transcription factors, typically containing a paired box domain and a paired-type homeodomain. It is expressed during organogenesis of the thyroid gland, kidney and Mullerian system. It is thought to regulate the expression of Wilms tumor suppressor (WT1) gene and mutations in PAX8 have been associated with Wilms tumor cells, thyroid and ovarian carcinomas. PAX8 is a useful marker in distinguishing ovarian carcinomas from mammary carcinomas (PMID: 18724243). PAX8 is expressed in a high percentage of ovarian serous, endometrioid, and clear cell carcinomas, but only rarely in primary ovarian mucinous adenocarcinomas. PAX8 has 5 isoforms with calculated MW 31kd, 34kd, 41kd, 43kd and 48kd. And there is a 60kd band corresponding to the electrophoretic mobility of PAX8 (PMID:15650356). Proteintech's 10336-1-AP antibody has cross-reactivities with the other PAX family members.

| | |
|-------------------------------|--|
| Target: | Paired Box Protein Pax-8 (PAX8) |
| Clonality: | Polyclonal |
| Reactivity: | Human, Mouse , Rat |
| Tested Applications: | ELISA, WB |
| Host: | Rabbit |
| Recommended dilutions: | ELISA: 1 µg/ml, WB: 1/500 - 1/1000. Optimal dilutions/concentrations should be determined by the end user. |
| Conjugation: | Unconjugated |
| Immunogen: | A synthetic peptide corresponding to a sequence within amino acids 200-300 of human PAX8. |
| Isotype: | IgG |
| Form: | Liquid |
| Purification: | Purified by affinity chromatography. |
| Storage: | Aliquot and store at -20°C. Avoid repeated freeze/thaw cycles. |

Datasheet

Version: 4.0.0

Revision date: 24 Jun 2025



UniProt Primary AC: Q06710 ([UniProt](#), [ExPASy](#))

Gene Symbol: PAX8

GeneID: [7849](#)

NCBI Accession: NP_003457.1

KEGG: hsa:7849

String: [9606.ENSP00000263334](#)

Molecular Weight: Calculated MW: 48 kDa
Observed MW: 48 kDa

Buffer: PBS, pH 7.3, containing 0.05% Proclin-300, 50% glycerol.

Concentration: > 0.2 mg/ml

Note: THIS PRODUCT IS FOR RESEARCH USE ONLY. NOT FOR USE IN DIAGNOSTIC, THERAPEUTIC OR COSMETIC PROCEDURES. NOT FOR HUMAN OR ANIMAL CONSUMPTION.

For Reference Only