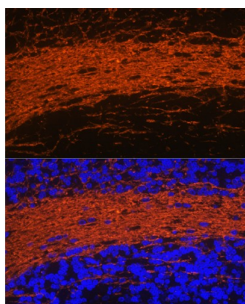
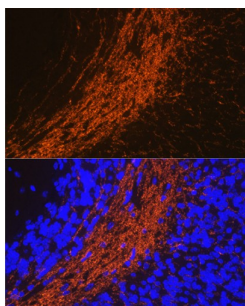


## 2, 3 Cyclic Nucleotide 3 Phosphohydrolase (CNP) Antibody

Catalogue No.: abx000961



Western blot analysis of various lysates using CNPase Antibody at 1/1000 dilution. Secondary antibody: HRP-conjugated Goat anti-Rabbit IgG (H+L) at 1/10000 dilution. Lysates / proteins: 25 µg per lane. Blocking buffer: 3 % nonfat dry milk in TBST. Detection: ECL Basic Kit (RM00020). Exposure time: 1s.



Immunofluorescence analysis of paraffin-embedded rat brain using CNPase Antibody at dilution of 1/100 (40x lens). Secondary antibody: Cy3-conjugated Goat anti-Rabbit IgG (H+L) at 1/500 dilution. Blue: DAPI for nuclear staining.

CNP Antibody is a Rabbit Polyclonal antibody against CNP. CNP (2',3'-cyclic nucleotide 3' phosphodiesterase) is a protein-coding gene. Diseases associated with CNP include hair disease, and schizophrenia. GO annotations related to this gene include RNA binding and 2',3'-cyclic-nucleotide 3'-phosphodiesterase activity.

**Target:** 2, 3 Cyclic Nucleotide 3 Phosphohydrolase (CNP)

**Clonality:** Polyclonal

**Reactivity:** Human, Mouse, Rat

**Tested Applications:** ELISA, WB, IF/ICC

**Host:** Rabbit

**Recommended dilutions:** ELISA: 1 µg/ml, WB: 1/500 - 1/2000, IF/ICC: 1/50 - 1/200. Optimal dilutions/concentrations should be determined by the end user.

**Conjugation:** Unconjugated

**Immunogen:** Recombinant protein corresponding to CNP. The exact sequence is proprietary.

**Isotype:** IgG

**Form:** Liquid

# Datasheet

Version: 7.0.0  
Revision date: 23 Sep 2025



<b>Purification:</b>	Purified by affinity chromatography.
<b>Storage:</b>	Aliquot and store at -20°C. Avoid repeated freeze/thaw cycles.
<b>UniProt Primary AC:</b>	P09543 ( <a href="#">UniProt</a> , <a href="#">ExPASy</a> )
<b>Gene Symbol:</b>	CNP
<b>GeneID:</b>	<a href="#">1267</a>
<b>NCBI Accession:</b>	NP_149124.3
<b>KEGG:</b>	hsa:1267
<b>String:</b>	<a href="#">9606.ENSP00000377470</a>
<b>Molecular Weight:</b>	Calculated MW: 48 kDa Observed MW: 48 kDa
<b>Buffer:</b>	PBS, pH 7.3, containing 0.02% sodium azide, 50% glycerol.
<b>Concentration:</b>	> 0.2 mg/ml
<b>Note:</b>	THIS PRODUCT IS FOR RESEARCH USE ONLY. NOT FOR USE IN DIAGNOSTIC, THERAPEUTIC OR COSMETIC PROCEDURES. NOT FOR HUMAN OR ANIMAL CONSUMPTION.