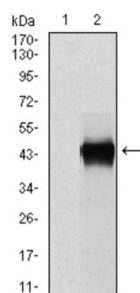
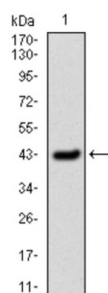


## Serpin Family E Member 1 (SERPINE1) Antibody

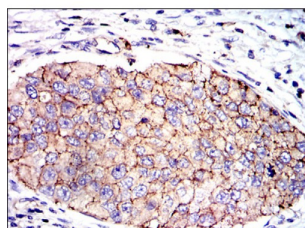
Catalogue No.: abx012034



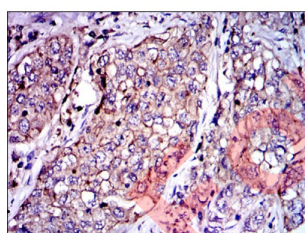
Western blot analysis using SERPINE1 antibody against human SERPINE1 (AA: 194-316) recombinant protein. (Expected MW is 45kDa kDa).



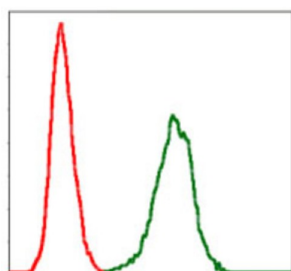
Western blot analysis using SERPINE1 antibody against HEK293 (1) and SERPINE1 (AA: 194-316) -hlgGfc transfected HEK293 (2) cell lysate.



Immunohistochemical analysis of paraffin-embedded lung cancer tissues using SERPINE1 antibody with DAB staining.



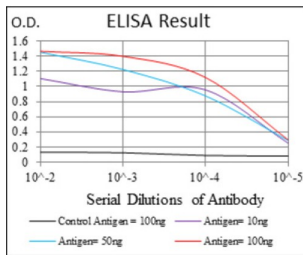
Immunohistochemical analysis of paraffin-embedded kidney cancer tissues using SERPINE1 antibody with DAB staining.



Flow cytometric analysis of NIH/3T3 cells using SERPINE1 antibody (green) and negative control (red).

# Datasheet

Version: 3.0.0  
Revision date: 13 Aug 2025



Red: Control Antigen (100ng) ; Purple: Antigen (10ng) ; Green: Antigen (50ng) ; Blue: Antigen (100ng).

This gene encodes a member of the serine proteinase inhibitor (serpin) superfamily. This member is the principal inhibitor of tissue plasminogen activator (tPA) and urokinase (uPA), and hence is an inhibitor of fibrinolysis. Defects in this gene are the cause of plasminogen activator inhibitor-1 deficiency (PAI-1 deficiency), and high concentrations of the gene product are associated with thrombophilia. Alternatively spliced transcript variants encoding different isoforms have been found for this gene.

**Target:** Serpin Family E Member 1 (SERPINE1)

**Clonality:** Monoclonal

**Reactivity:** Human

**Tested Applications:** ELISA, IHC, FCM

**Host:** Mouse

**Recommended dilutions:** ELISA: 1/10000, IHC: 1/200 - 1/1000, FCM: 1/200 - 1/400. Optimal dilutions/concentrations should be determined by the end user.

**Conjugation:** Unconjugated

**Immunogen:** Purified recombinant fragment of human SERPINE1 expressed in E. coli.

**Isotype:** IgG<sub>1</sub>

**Form:** Liquid

**Purification:** Purified from ascites by Protein G chromatography.

**Storage:** Aliquot and store at -20°C. Avoid repeated freeze/thaw cycles.

**UniProt Primary AC:** P05121 ([UniProt](#), [ExPASy](#))

**Gene Symbol:** SERPINE1

**GeneID:** [5054](#)

# Datasheet

Version: 3.0.0

Revision date: 13 Aug 2025



**OMIM:** [173360](#)

**HGNC:** 8583

**KEGG:** hsa:5054

**Ensembl:** ENSG00000106366

**String:** [9606.ENSP00000223095](#)

**Molecular Weight:** 45 kDa

**Buffer:** PBS, containing 0.05% sodium azide.

**Concentration:** 1 mg/ml

**Note:** THIS PRODUCT IS FOR RESEARCH USE ONLY. NOT FOR USE IN DIAGNOSTIC, THERAPEUTIC OR COSMETIC PROCEDURES. NOT FOR HUMAN OR ANIMAL CONSUMPTION.

For Reference Only