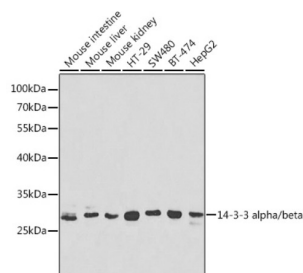
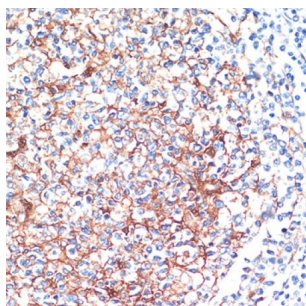


14-3-3 Protein Beta/Alpha (YWHAB) Antibody

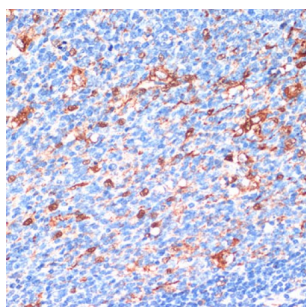
Catalogue No.: abx000964



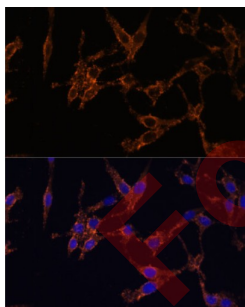
Western blot analysis of various lysates using 14-3-3 alpha/beta Antibody at 1/1000 dilution. Secondary antibody: HRP-conjugated Goat anti-Rabbit IgG (H+L) at 1/10000 dilution. Lysates/proteins: 25 µg per lane. Blocking buffer: 3% nonfat dry milk in TBST.



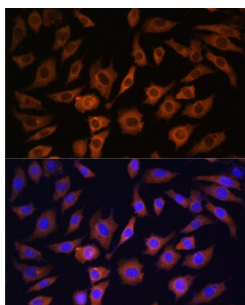
Immunohistochemistry analysis of paraffin-embedded Human tonsil using 14-3-3 alpha/beta Antibody at dilution of 1/200 (40x lens). Microwave antigen retrieval performed in 0.01 M PBS Buffer (pH 7.2) prior to IHC staining.



Immunohistochemistry analysis of paraffin-embedded Human appendix using 14-3-3 alpha/beta Antibody at dilution of 1/200 (40x lens). Microwave antigen retrieval performed in 0.01 M PBS Buffer (pH 7.2) prior to IHC staining.



Immunofluorescence analysis of HeLa cells using 14-3-3 alpha/beta Antibody at dilution of 1/100. Secondary antibody: Cy3-conjugated Goat anti-Rabbit IgG (H+L) at 1/500 dilution. Blue: DAPI for nuclear staining.



Immunofluorescence analysis of L929 cells using 14-3-3 alpha/beta Antibody at dilution of 1/100. Secondary antibody: Cy3-conjugated Goat anti-Rabbit IgG (H+L) at 1/500 dilution. Blue: DAPI for nuclear staining.

Datasheet

Version: 6.0.0
Revision date: 12 Jun 2025



YWHAB Antibody is a Rabbit Polyclonal antibody against YWHAB. This gene encodes a protein belonging to the 14-3-3 family of proteins, members of which mediate signal transduction by binding to phosphoserine-containing proteins. This highly conserved protein family is found in both plants and mammals. The encoded protein has been shown to interact with RAF1 and CDC25 phosphatases, suggesting that it may play a role in linking mitogenic signaling and the cell cycle machinery. Two transcript variants, which encode the same protein, have been identified for this gene.

Target: 14-3-3 Protein Beta/Alpha (YWHAB)

Clonality: Polyclonal

Reactivity: Human, Mouse, Rat

Tested Applications: ELISA, WB, IHC, IF/ICC, IP

Host: Rabbit

Recommended dilutions: ELISA: 1 µg/ml, WB: 1/500 - 1/2000, IHC-P: 1/50 - 1/100, IF/ICC: 1/50 - 1/200, IP: 0.5 µg - 4 µg antibody per 200 µg - 400 µg extracts of whole cells. Not tested in IHC-F. Optimal dilutions/concentrations should be determined by the end user.

Conjugation: Unconjugated

Immunogen: A synthetic peptide corresponding to a sequence within amino acids 150-246 of human 14-3-3 alpha/beta.

Isotype: IgG

Form: Liquid

Purification: Purified by affinity chromatography.

Storage: Aliquot and store at -20°C. Avoid repeated freeze/thaw cycles.

UniProt Primary AC: P31946 ([UniProt](#), [ExPASy](#))

Gene Symbol: YWHAB

GeneID: [7529](#)

NCBI Accession: NP_003395.1

KEGG: hsa:7529

String: [9606.ENSP00000361930](#)

Molecular Weight: Calculated MW: 28 kDa
Observed MW: 28 kDa

Datasheet

Version: 6.0.0

Revision date: 12 Jun 2025



Buffer: PBS, pH 7.3, containing 0.02% sodium azide, 50% glycerol.

Concentration: > 0.2 mg/ml

Note: THIS PRODUCT IS FOR RESEARCH USE ONLY. NOT FOR USE IN DIAGNOSTIC, THERAPEUTIC OR COSMETIC PROCEDURES. NOT FOR HUMAN OR ANIMAL CONSUMPTION.

For Reference Only