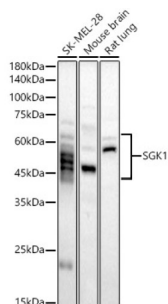
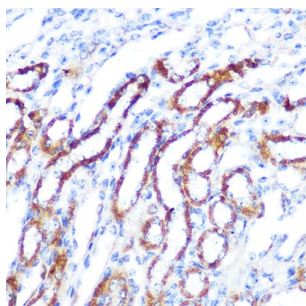


Serine/Threonine-Protein Kinase Sgk1 (SGK1) Antibody

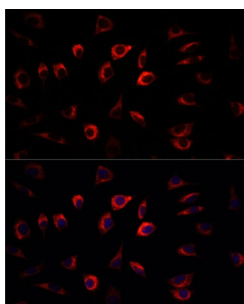
Catalogue No.: abx000966



Western blot analysis of various lysates, using SGK1 Antibody at 1/400 dilution. Secondary antibody: HRP-conjugated Goat anti-Rabbit IgG (H+L) at 1/10000 dilution. Lysates/proteins: 25 µg per lane. Blocking buffer: 3% nonfat dry milk in TBST. Exposure time: 90s.



Immunohistochemistry analysis of paraffin-embedded Mouse kidney using SGK1 Antibody at dilution of 1/100 (40x lens). Microwave antigen retrieval performed in 0.01 M Tris/EDTA Buffer (pH 9.0) prior to IHC staining.



Immunofluorescence analysis of L929 cells using SGK1 Antibody at dilution of 1/100. Secondary antibody: Cy3-conjugated Goat anti-Rabbit IgG (H+L) at 1/500 dilution. Blue: DAPI for nuclear staining.

SGK1 Antibody is a Rabbit Polyclonal antibody against SGK1. This gene encodes a serine/threonine protein kinase that plays an important role in cellular stress response. This kinase activates certain potassium, sodium, and chloride channels, suggesting an involvement in the regulation of processes such as cell survival, neuronal excitability, and renal sodium excretion. High levels of expression of this gene may contribute to conditions such as hypertension and diabetic nephropathy. Several alternatively spliced transcript variants encoding different isoforms have been noted for this gene.

Target: Serine/Threonine-Protein Kinase Sgk1 (SGK1)

Clonality: Polyclonal

Reactivity: Mouse, Rat

Tested Applications: ELISA, WB, IHC, IF/ICC

Host: Rabbit

Datasheet

Version: 5.0.0
Revision date: 15 Aug 2025



Recommended dilutions: ELISA: 1 µg/ml, WB: 1/100 - 1/500, IHC-P: 1/50 - 1/200, IF/ICC: 1/50 - 1/200. Not tested in IHC-F.
Optimal dilutions/concentrations should be determined by the end user.

Conjugation: Unconjugated

Immunogen: Recombinant protein corresponding to SGK1. The exact sequence is proprietary.

Isotype: IgG

Form: Liquid

Purification: Purified by affinity chromatography.

Storage: Aliquot and store at -20°C. Avoid repeated freeze/thaw cycles.

UniProt Primary AC: O00141 ([UniProt](#), [ExPASy](#))

Gene Symbol: SGK1

GeneID: [6446](#)

NCBI Accession: NP_005618.2

KEGG: hsa:6446

String: [9606.ENSP00000356832](#)

Molecular Weight: Calculated MW: 49 kDa
Observed MW: 45-60 kDa

Buffer: PBS, pH 7.3, containing 0.05% Proclin-300, 50% glycerol.

Concentration: > 0.2 mg/ml

Note: THIS PRODUCT IS FOR RESEARCH USE ONLY. NOT FOR USE IN DIAGNOSTIC, THERAPEUTIC OR COSMETIC PROCEDURES. NOT FOR HUMAN OR ANIMAL CONSUMPTION.