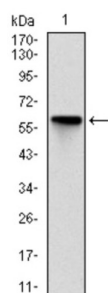
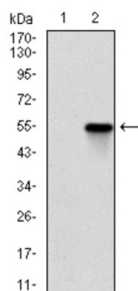


## Rho-Associated Protein Kinase 1 (ROCK1) Antibody

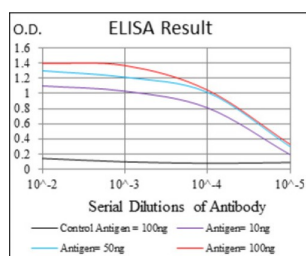
Catalogue No.: abx012064



Western blot analysis using ROCK1 antibody against human ROCK1 (AA: 403-610) recombinant protein. (Expected MW is 158 kDa).



Western blot analysis using ROCK1 antibody against HEK293 (1) and ROCK1 (AA: 403-610) - hlgGfC transfected HEK293 (2) cell lysate.



Red: Control Antigen (100ng) ; Purple: Antigen (10ng) ; Green: Antigen (50ng) ; Blue: Antigen (100ng).

This gene encodes a protein serine/threonine kinase that is activated when bound to the GTP-bound form of Rho. The small GTPase Rho regulates formation of focal adhesions and stress fibers of fibroblasts, as well as adhesion and aggregation of platelets and lymphocytes by shuttling between the inactive GDP-bound form and the active GTP-bound form. Rho is also essential in cytokinesis and plays a role in transcriptional activation by serum response factor. This protein, a downstream effector of Rho, phosphorylates and activates LIM kinase, which in turn, phosphorylates cofilin, inhibiting its actin-depolymerizing activity.

**Target:** Rho-Associated Protein Kinase 1 (ROCK1)

**Clonality:** Monoclonal

**Reactivity:** Human

**Tested Applications:** ELISA

**Host:** Mouse

# Datasheet

Version: 3.0.0  
Revision date: 05 Mar 2025



**Recommended dilutions:** ELISA: 1/10000. Optimal dilutions/concentrations should be determined by the end user.

**Conjugation:** Unconjugated

**Immunogen:** Purified recombinant fragment of human ROCK1 expressed in E. coli.

**Isotype:** IgG<sub>1</sub>

**Form:** Liquid

**Purification:** Purified from ascites by Protein G chromatography.

**Storage:** Aliquot and store at -20°C. Avoid repeated freeze/thaw cycles.

**UniProt Primary AC:** Q13464 ([UniProt](#), [ExPASy](#))

**Gene Symbol:** ROCK1

**GeneID:** [6093](#)

**OMIM:** [601702](#)

**HGNC:** 10251

**KEGG:** hsa:6093

**Ensembl:** ENSG00000067900

**String:** [9606.ENSP00000382697](#)

**Molecular Weight:** 158 kDa

**Buffer:** PBS, containing 0.05% sodium azide.

**Concentration:** 1 mg/ml

**Note:** THIS PRODUCT IS FOR RESEARCH USE ONLY. NOT FOR USE IN DIAGNOSTIC, THERAPEUTIC OR COSMETIC PROCEDURES. NOT FOR HUMAN OR ANIMAL CONSUMPTION.