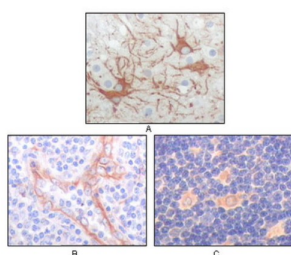


## Feline Sarcoma Oncogene (FES) Antibody

Catalogue No.: abx012141



Western blot analysis using FES antibody against truncated FES recombinant protein.



Immunohistochemical analysis of paraffin-embedded human cerebrum tumor (A), endothelium of vessel (B), lymphocyte of thymus (C), showing cytoplasmic localization using FES antibody with DAB staining.

This gene encodes the human cellular counterpart of a feline sarcoma retrovirus protein with transforming capabilities. The gene product has tyrosine-specific protein kinase activity and that activity is required for maintenance of cellular transformation. Its chromosomal location has linked it to a specific translocation event identified in patients with acute promyelocytic leukemia but it is also involved in normal hematopoiesis. A truncated transcript has been identified that is generated utilizing a start site in one of the far downstream exons but a protein product associated with this transcript has not been identified.

<b>Target:</b>	Feline Sarcoma Oncogene (FES)
<b>Clonality:</b>	Monoclonal
<b>Reactivity:</b>	Human
<b>Tested Applications:</b>	ELISA, IHC
<b>Host:</b>	Mouse
<b>Recommended dilutions:</b>	ELISA: 1/10000, IHC: 1/200 - 1/1000. Optimal dilutions/concentrations should be determined by the end user.
<b>Conjugation:</b>	Unconjugated
<b>Immunogen:</b>	Purified recombinant fragment of FES (AA:613-822) expressed in E. coli.
<b>Isotype:</b>	IgG <sub>1</sub>

# Datasheet

Version: 3.0.0

Revision date: 20 Aug 2025



<b>Form:</b>	Liquid
<b>Purification:</b>	Unpurified ascites.
<b>Storage:</b>	Aliquot and store at -20°C. Avoid repeated freeze/thaw cycles.
<b>UniProt Primary AC:</b>	P07332 ( <a href="#">UniProt</a> , <a href="#">ExPASy</a> )
<b>Gene Symbol:</b>	FES
<b>GeneID:</b>	<a href="#">2242</a>
<b>OMIM:</b>	<a href="#">190030</a>
<b>HGNC:</b>	3657
<b>Ensembl:</b>	ENSG00000182511
<b>Enzyme Commission Number:</b>	EC 2.7.10.2
<b>Molecular Weight:</b>	93 kDa
<b>Buffer:</b>	Ascitic fluid containing 0.03% sodium azide.
<b>Concentration:</b>	Not determined.
<b>Note:</b>	THIS PRODUCT IS FOR RESEARCH USE ONLY. NOT FOR USE IN DIAGNOSTIC, THERAPEUTIC OR COSMETIC PROCEDURES. NOT FOR HUMAN OR ANIMAL CONSUMPTION.