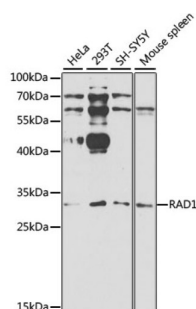


RAD1 Checkpoint DNA Exonuclease (RAD1) Antibody

Catalogue No.: abx000974



Western blot analysis of extracts of various cell lines using RAD1 Antibody (1/1000 dilution).

RAD1 Antibody is a Rabbit Polyclonal antibody against RAD1. This gene encodes a component of a heterotrimeric cell cycle checkpoint complex, known as the 9-1-1 complex, that is activated to stop cell cycle progression in response to DNA damage or incomplete DNA replication. The 9-1-1 complex is recruited by RAD17 to affected sites where it may attract specialized DNA polymerases and other DNA repair effectors. Alternatively spliced transcript variants of this gene have been described. [provided by RefSeq, Jan 2009].

Target:	RAD1 Checkpoint DNA Exonuclease (RAD1)
Clonality:	Polyclonal
Reactivity:	Human, Mouse
Tested Applications:	WB
Host:	Rabbit
Recommended dilutions:	WB: 1/500 - 1/2000. Optimal dilutions/concentrations should be determined by the end user.
Conjugation:	Unconjugated
Immunogen:	Recombinant fusion protein corresponding to human RAD1
Isotype:	IgG
Form:	Liquid
Purification:	Purified by affinity chromatography.
Storage:	Aliquot and store at -20°C. Avoid repeated freeze/thaw cycles.
UniProt Primary AC:	O60671 (UniProt , ExPASy)

Datasheet

Version: 4.0.0

Revision date: 18 Aug 2025



Gene Symbol: RAD1

GeneID: [5810](#)

NCBI Accession: NP_002844.1

KEGG: hsa:5810

String: [9606.ENSP00000371469](#)

Molecular Weight: Calculated MW: 7 kDa/27 kDa/31 kDa
Observed MW: 32 kDa

Buffer: PBS, pH 7.3, containing 0.02% sodium azide, 50% glycerol.

Concentration: 1 mg/ml

Note: THIS PRODUCT IS FOR RESEARCH USE ONLY. NOT FOR USE IN DIAGNOSTIC, THERAPEUTIC OR COSMETIC PROCEDURES. NOT FOR HUMAN OR ANIMAL CONSUMPTION.

For Reference Only