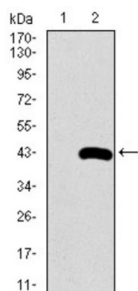
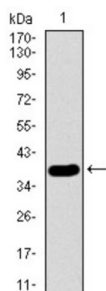


## Pulmonary Surfactant-Associated Protein C (SFTPC) Antibody

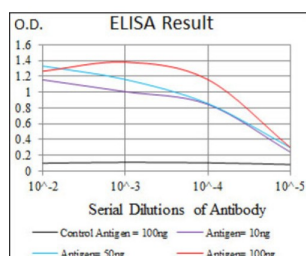
Catalogue No.: abx012157



WB analysis of HEK293 cell (lane 1) and SFTPC (60-180 AA)-hlgGFc transfected HEK293 cell (lane 2) lysates using SFTPC antibody.



WB analysis of recombinant Human SFTPC protein using SFTPC antibody. Calculated MW: 38.4 kDa.



ELISA analysis of serial dilutions of SFTCP antigen using SFTCP antibody. Red: 100 ng control antigen, Purple: 10 ng SFTCP antigen, Green: 50 ng SFTCP antigen, Blue: 100 ng SFTCP antigen.

This gene encodes the pulmonary-associated surfactant protein C (SPC), an extremely hydrophobic surfactant protein essential for lung function and homeostasis after birth. Pulmonary surfactant is a surface-active lipoprotein complex composed of 90% lipids and 10% proteins which include plasma proteins and apolipoproteins SPA, SPB, SPC and SPD. The surfactant is secreted by the alveolar cells of the lung and maintains the stability of pulmonary tissue by reducing the surface tension of fluids that coat the lung. Multiple mutations in this gene have been identified, which cause pulmonary surfactant metabolism dysfunction type 2, also called pulmonary alveolar proteinosis due to surfactant protein C deficiency, and are associated with interstitial lung disease in older infants, children, and adults.

**Target:** Pulmonary Surfactant-Associated Protein C (SFTPC)

**Clonality:** Monoclonal

**Clone:** F679

**Reactivity:** Human

# Datasheet

Version: 3.0.0  
Revision date: 03 Sep 2025



<b>Tested Applications:</b>	ELISA, WB
<b>Host:</b>	Mouse
<b>Recommended dilutions:</b>	ELISA: 1/10000, WB: 1/500-1/2000. Optimal dilutions/concentrations should be determined by the end user.
<b>Conjugation:</b>	Unconjugated
<b>Immunogen:</b>	Purified recombinant fragment of Human SFTPC (60-180 AA) expressed in E. coli.
<b>Isotype:</b>	IgG <sub>1</sub>
<b>Form:</b>	Liquid
<b>Purification:</b>	Purified from ascites by Protein G chromatography.
<b>Storage:</b>	Aliquot and store at -20°C. Avoid repeated freeze/thaw cycles.
<b>UniProt Primary AC:</b>	P11686 ( <a href="#">UniProt</a> , <a href="#">ExPASy</a> )
<b>Gene Symbol:</b>	SFTPC
<b>GeneID:</b>	<a href="#">6440</a>
<b>OMIM:</b>	<a href="#">178620</a>
<b>HGNC:</b>	10802
<b>KEGG:</b>	hsa:6440
<b>Ensembl:</b>	ENSG00000168484
<b>String:</b>	<a href="#">9606.ENSP00000316152</a>
<b>Molecular Weight:</b>	21 kDa
<b>Buffer:</b>	PBS, containing 0.05% sodium azide and 0.5% protein stabilizer.
<b>Concentration:</b>	1 mg/ml
<b>Note:</b>	THIS PRODUCT IS FOR RESEARCH USE ONLY. NOT FOR USE IN DIAGNOSTIC, THERAPEUTIC OR COSMETIC PROCEDURES. NOT FOR HUMAN OR ANIMAL CONSUMPTION.