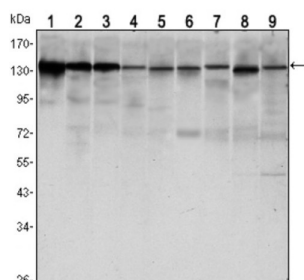
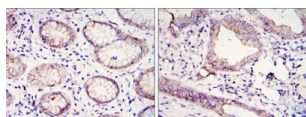


Cadherin-1 (CDH1) Antibody

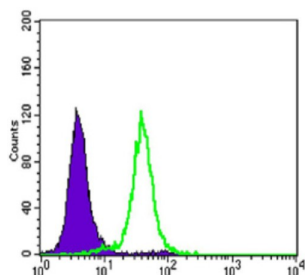
Catalogue No.: abx012163



Western blot analysis using CDH1 antibody against LNCAP (1), A431 (2), DU145 (3), PC-3 (4), MCF-7 (5), PC-12 (6), NIH/3T3 (7), C6 (8) and COS7 (9) cell lysate.



Immunohistochemical analysis of paraffin-embedded gastric cancer tissues (left) and lung cancer tissues (right) using CDH1 antibody with DAB staining.



Flow cytometric analysis of HeLa cells using CDH1 antibody (green) and negative control (purple).

This gene is a classical cadherin from the cadherin superfamily. The encoded protein is a calcium dependent cell-cell adhesion glycoprotein comprised of five extracellular cadherin repeats, a transmembrane region and a highly conserved cytoplasmic tail. Mutations in this gene are correlated with gastric, breast, colorectal, thyroid and ovarian cancer. Loss of function is thought to contribute to progression in cancer by increasing proliferation, invasion, and/or metastasis. The ectodomain of this protein mediates bacterial adhesion to mammalian cells and the cytoplasmic domain is required for internalization. Identified transcript variants arise from mutation at consensus splice sites. [provided by RefSeq].

Target:	Cadherin-1 (CDH1)
Research Area:	Tumour Immunity
Clonality:	Monoclonal
Reactivity:	Human, Mouse, Monkey
Tested Applications:	ELISA, WB, IHC, FCM

Datasheet

Version: 3.0.0
Revision date: 05 Jul 2025



Host: Mouse

Recommended dilutions: ELISA: 1/10000, WB: 1/500 - 1/2000, IHC: 1/200 - 1/1000, FCM: 1/200 - 1/400. Optimal dilutions/concentrations should be determined by the end user.

Conjugation: Unconjugated

Immunogen: Purified recombinant fragment of human CDH1 expressed in E. coli.

Isotype: IgG₁

Form: Liquid

Purification: Unpurified ascites.

Storage: Aliquot and store at -20°C. Avoid repeated freeze/thaw cycles.

UniProt Primary AC: P12830 ([UniProt](#), [ExPASy](#))

GeneID: [999](#)

KEGG: hsa:999

String: [9606.ENSP00000261769](#)

Molecular Weight: 135 kDa

Buffer: Ascitic fluid containing 0.03% sodium azide.

Concentration: Not determined.

Note: THIS PRODUCT IS FOR RESEARCH USE ONLY. NOT FOR USE IN DIAGNOSTIC, THERAPEUTIC OR COSMETIC PROCEDURES. NOT FOR HUMAN OR ANIMAL CONSUMPTION.