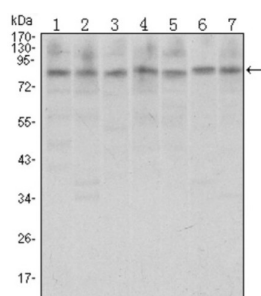


Transcriptional Repressor CTCF (CTCF) Antibody

Catalogue No.: abx012166



Western blot analysis using CTCF antibody against A31 (1), MCF-7 (2), Hela (3), HCT116 (4), Jurkat (5), NIH/3T3 (6), and Cos7 (7) cell lysate.

This gene is a member of the BORIS + CTCF gene family and encodes a transcriptional regulator protein with 11 highly conserved zinc finger (ZF) domains. This nuclear protein is able to use different combinations of the ZF domains to bind different DNA target sequences and proteins. Depending upon the context of the site, the protein can bind a histone acetyltransferase (HAT)-containing complex and function as a transcriptional activator or bind a histone deacetylase (HDAC)-containing complex and function as a transcriptional repressor. If the protein is bound to a transcriptional insulator element, it can block communication between enhancers and upstream promoters, thereby regulating imprinted expression. Mutations in this gene have been associated with invasive breast cancers, prostate cancers, and Wilms' tumors. Tissue specificity: Ubiquitous. Absent in primary spermatocytes.

Target:	Transcriptional Repressor CTCF (CTCF)
Clonality:	Monoclonal
Reactivity:	Human, Monkey
Tested Applications:	ELISA, WB
Host:	Mouse
Recommended dilutions:	ELISA: 1/10000, WB: 1/500 - 1/2000. Optimal dilutions/concentrations should be determined by the end user.
Conjugation:	Unconjugated
Immunogen:	Purified recombinant fragment of human CTCF expressed in E. coli.
Isotype:	IgG ₁
Form:	Liquid
Purification:	Unpurified ascites.
Storage:	Aliquot and store at -20°C. Avoid repeated freeze/thaw cycles.

Datasheet

Version: 3.0.0

Revision date: 12 Sep 2025



UniProt Primary AC: P49711 ([UniProt](#), [ExPASy](#))

GeneID: [10664](#)

KEGG: hsa:10664

String: [9606.ENSP00000264010](#)

Molecular Weight: 83 kDa

Buffer: Ascitic fluid containing 0.03% sodium azide.

Concentration: Not determined.

Note: THIS PRODUCT IS FOR RESEARCH USE ONLY. NOT FOR USE IN DIAGNOSTIC, THERAPEUTIC OR COSMETIC PROCEDURES. NOT FOR HUMAN OR ANIMAL CONSUMPTION.

For Reference Only