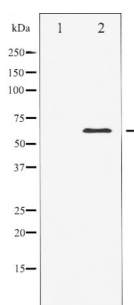


ELK1, Member Of ETS Oncogene Family (ELK1) Antibody

Catalogue No.: abx012170



Western blot analysis of Elk1 expression in heatshock treated HeLa whole cell lysates, The lane on the left is treated with the antigen-specific peptide.

Elk1 Antibody detects endogenous levels of total Elk1. This gene is a member of the Ets family of transcription factors and of the ternary complex factor (TCF) subfamily. Proteins of the TCF subfamily form a ternary complex by binding to the the serum response factor and the serum reponse element in the promoter of the c-fos proto-oncogene.

Target:	ELK1, Member Of ETS Oncogene Family (ELK1)
Clonality:	Polyclonal
Reactivity:	Human, Mouse, Rat
Tested Applications:	WB, IHC
Host:	Rabbit
Recommended dilutions:	WB: 1/500 - 1/2000. Optimal dilutions/concentrations should be determined by the end user.
Conjugation:	Unconjugated
Immunogen:	Synthesised peptide derived from human Elk1
Form:	Liquid
Purification:	Purified by immunogen affinity chromatography.
Storage:	Aliquot and store at -20°C. Avoid repeated freeze/thaw cycles.
UniProt Primary AC:	P19419 (UniProt , ExPASy)
Gene Symbol:	ELK1
Ensembl:	ENSG00000126767

Datasheet

Version: 3.0.0

Revision date: 08 Aug 2025



Molecular Weight: 62 kDa

Buffer: PBS, pH 7.4, 150 mM NaCl, 0.02% sodium azide and 50% glycerol.

Specificity: Elk1 Antibody detects endogenous levels of total Elk1

Concentration: 1 mg/ml

Note: THIS PRODUCT IS FOR RESEARCH USE ONLY. NOT FOR USE IN DIAGNOSTIC, THERAPEUTIC OR COSMETIC PROCEDURES. NOT FOR HUMAN OR ANIMAL CONSUMPTION.

For Reference Only