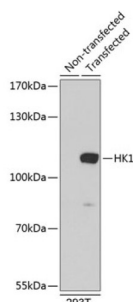


Hexokinase-1 (HK1) Antibody

Catalogue No.: abx000977



Western blot analysis of extracts of 293T cells using HK1 Antibody

HK1 Antibody is a Rabbit Polyclonal antibody against HK1. Hexokinases phosphorylate glucose to produce glucose-6-phosphate, the first step in most glucose metabolism pathways. This gene encodes a ubiquitous form of hexokinase which localizes to the outer membrane of mitochondria. Mutations in this gene have been associated with hemolytic anemia due to hexokinase deficiency. Alternative splicing of this gene results in five transcript variants which encode different isoforms, some of which are tissue-specific. Each isoform has a distinct N-terminus; the remainder of the protein is identical among all the isoforms. A sixth transcript variant has been described, but due to the presence of several stop codons, it is not thought to encode a protein.

Target: Hexokinase-1 (HK1)

Clonality: Polyclonal

Reactivity: Human

Tested Applications: WB

Host: Rabbit

Recommended dilutions: WB: 1/500 - 1/1000. Optimal dilutions/concentrations should be determined by the end user.

Conjugation: Unconjugated

Immunogen: Recombinant fusion protein corresponding to human HK1

Isotype: IgG

Form: Liquid

Purification: Purified by affinity chromatography.

Storage: Aliquot and store at -20°C. Avoid repeated freeze/thaw cycles.

UniProt Primary AC: P19367 ([UniProt](#), [ExPASy](#))

Datasheet

Version: 4.0.0

Revision date: 09 Oct 2025



Gene Symbol: HK1

GeneID: [3098](#)

NCBI Accession: NP_000179.2

KEGG: hsa:3098

String: [9606.ENSP00000402103](#)

Molecular Weight: Calculated MW: 101 kDa/102 kDa
Observed MW: 110 kDa

Buffer: PBS, pH 7.3, containing 0.02% sodium azide, 50% glycerol.

Concentration: 1 mg/ml

Note: THIS PRODUCT IS FOR RESEARCH USE ONLY. NOT FOR USE IN DIAGNOSTIC, THERAPEUTIC OR COSMETIC PROCEDURES. NOT FOR HUMAN OR ANIMAL CONSUMPTION.

For Reference Only