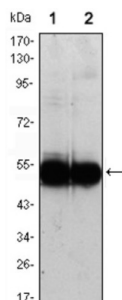
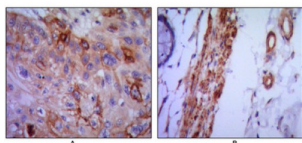


Vascular Cell Adhesion Molecule 1 (VCAM1) Antibody

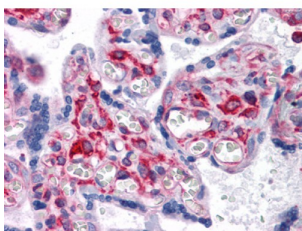
Catalogue No.: abx012173



Western blot analysis using VCAM1 antibody against HUVEC (1) and EC (2) cell lysate.



Immunohistochemical analysis of paraffin-embedded human lung cancer (A) and colon cancer (B) using VCAM1 antibody with DAB staining.



Immunohistochemical analysis of paraffin-embedded human Placenta tissues using VCAM1 antibody.

This gene is a member of the Ig superfamily and encodes a cell surface sialoglycoprotein expressed by cytokine-activated endothelium. This type I membrane protein mediates leukocyte-endothelial cell adhesion and signal transduction, and may play a role in the development of atherosclerosis and rheumatoid arthritis. Two alternatively spliced transcripts encoding different isoforms have been described for this gene. Tissue specificity: Expressed on inflamed vascular endothelium, as well as on macrophage-like and dendritic cell types in both normal and inflamed tissue. INVITROGEN: CD106 is expressed on bone marrow stromal cells, myeloid cells, and endothelial cells.

Target: Vascular Cell Adhesion Molecule 1 (VCAM1)

Clonality: Monoclonal

Reactivity: Human

Tested Applications: ELISA, WB, IHC

Host: Mouse

Datasheet

Version: 3.0.0
Revision date: 29 Aug 2025



Recommended dilutions: ELISA: 1/10000, WB: 1/500 - 1/2000, IHC: 1/200 - 1/1000. Optimal dilutions/concentrations should be determined by the end user.

Conjugation: Unconjugated

Immunogen: Purified recombinant fragment of human VCAM1 expressed in E. coli.

Isotype: IgG₁

Form: Liquid

Purification: Unpurified ascites.

Storage: Aliquot and store at -20°C. Avoid repeated freeze/thaw cycles.

UniProt Primary AC: P19320 ([UniProt](#), [ExPASy](#))

Gene Symbol: VCAM1

GeneID: [7412](#)

OMIM: [192225](#)

HGNC: 12663

KEGG: hsa:7412

Ensembl: ENSG00000162692

String: [9606.ENSP00000294728](#)

Molecular Weight: 81 kDa

Buffer: Ascitic fluid containing 0.03% sodium azide.

Concentration: Not determined.

Note: THIS PRODUCT IS FOR RESEARCH USE ONLY. NOT FOR USE IN DIAGNOSTIC, THERAPEUTIC OR COSMETIC PROCEDURES. NOT FOR HUMAN OR ANIMAL CONSUMPTION.