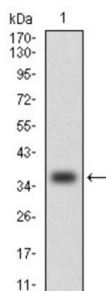
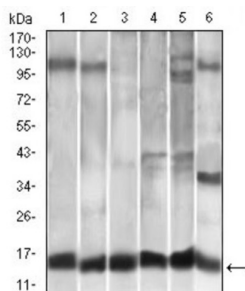


C-C Motif Chemokine 2 / MCP1 (CCL2) Antibody

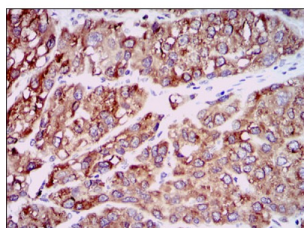
Catalogue No.: abx012194



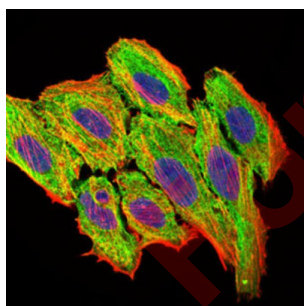
Western blot analysis using CCL2 antibody against human CCL2 (AA: 1-99) recombinant protein. (Expected MW is 36.5 kDa).



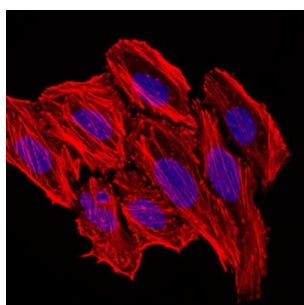
Western blot analysis using CCL2 antibody against A549 (1), HeLa (2), Raw264.7 (3), L1210 (4), C6 (5), and COS-7 (6) cell lysate.



Immunohistochemical analysis of paraffin-embedded liver cancer tissues using CCL2 antibody with DAB staining.



Immunofluorescence analysis of HepG2 cells. Blue: DRAQ5 fluorescent DNA dye. Red: Actin filaments have been labeled with AF555 phalloidin.

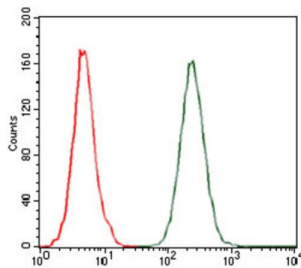


Immunofluorescence analysis of HepG2 cells using CCL2 antibody (green). Blue: DRAQ5 fluorescent DNA dye. Red: Actin filaments have been labeled with AF555 phalloidin.

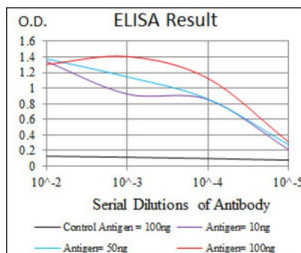
Datasheet

Version: 6.0.0

Revision date: 07 Aug 2025



Flow cytometric analysis of A549 cells using CCL2 antibody (green) and negative control (red).



Red: Control Antigen (100ng) ; Purple: Antigen (10ng) ; Green: Antigen (50ng) ; Blue: Antigen (100ng).

This gene is one of several cytokine genes clustered on the q-arm of chromosome 17. Cytokines are a family of secreted proteins involved in immunoregulatory and inflammatory processes. The protein encoded by this gene is structurally related to the CXC subfamily of cytokines. Members of this subfamily are characterized by two cysteines separated by a single amino acid. This cytokine displays chemotactic activity for monocytes and basophils but not for neutrophils or eosinophils. It has been implicated in the pathogenesis of diseases characterized by monocytic infiltrates, like psoriasis, rheumatoid arthritis and atherosclerosis. It binds to chemokine receptors CCR2 and CCR4.

Target: C-C Motif Chemokine 2 / MCP1 (CCL2)

Clonality: Monoclonal

Reactivity: Human, Mouse, Monkey

Tested Applications: ELISA, WB, IHC, IF/ICC, FCM

Host: Mouse

Recommended dilutions: ELISA: 1/10000, WB: 1/500 - 1/2000, IHC: 1/200 - 1/1000, IF/ICC: 1/200 - 1/1000, FCM: 1/200 - 1/400. Optimal dilutions/concentrations should be determined by the end user.

Conjugation: Unconjugated

Immunogen: Purified recombinant fragment of human CCL2 expressed in E. coli.

Isotype: IgG₁

Form: Liquid

Datasheet

Version: 6.0.0
Revision date: 07 Aug 2025



Purification:	Purified from ascites by Protein G chromatography.
Storage:	Aliquot and store at -20°C. Avoid repeated freeze/thaw cycles.
UniProt Primary AC:	P13500 (UniProt , ExPASy)
Gene Symbol:	CCL2
GeneID:	6347
OMIM:	158105
NCBI Accession:	NP_002973.1, NM_002982.3
HGNC:	10618
KEGG:	hsa:6347
Ensembl:	ENSG00000108691
String:	9606.ENSP00000225831
Molecular Weight:	11 kDa
Buffer:	PBS, containing 0.05% sodium azide.
Concentration:	1 mg/ml
Note:	THIS PRODUCT IS FOR RESEARCH USE ONLY. NOT FOR USE IN DIAGNOSTIC, THERAPEUTIC OR COSMETIC PROCEDURES. NOT FOR HUMAN OR ANIMAL CONSUMPTION.