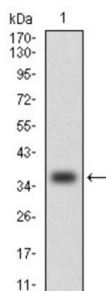
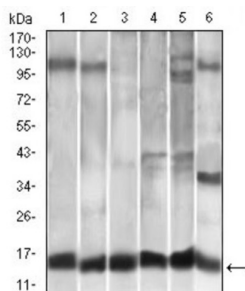


## C-C Motif Chemokine 2 / MCP1 (CCL2) Antibody

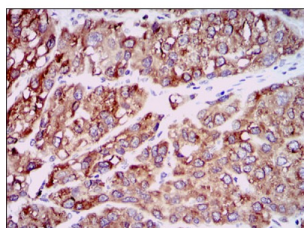
Catalogue No.: abx012194



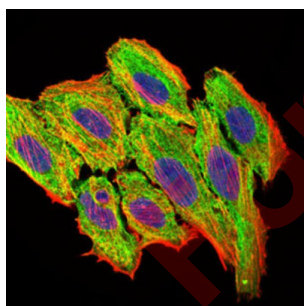
Western blot analysis using CCL2 antibody against human CCL2 (AA: 1-99) recombinant protein. (Expected MW is 36.5 kDa).



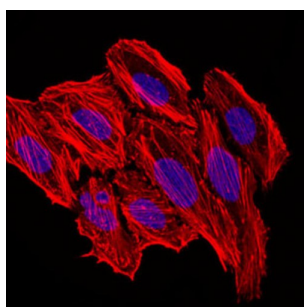
Western blot analysis using CCL2 antibody against A549 (1), HeLa (2), Raw264.7 (3), L1210 (4), C6 (5), and COS-7 (6) cell lysate.



Immunohistochemical analysis of paraffin-embedded liver cancer tissues using CCL2 antibody with DAB staining.



Immunofluorescence analysis of HepG2 cells. Blue: DRAQ5 fluorescent DNA dye. Red: Actin filaments have been labeled with AF555 phalloidin.

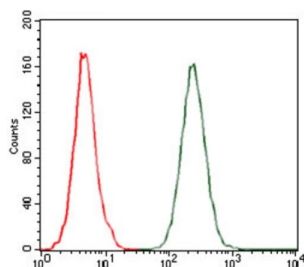


Immunofluorescence analysis of HepG2 cells using CCL2 antibody (green). Blue: DRAQ5 fluorescent DNA dye. Red: Actin filaments have been labeled with AF555 phalloidin.

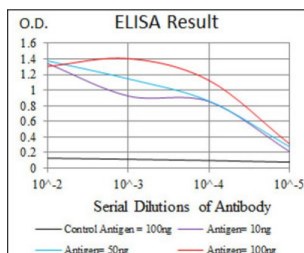
# Datasheet

Version: 6.0.0

Revision date: 01 May 2025



Flow cytometric analysis of A549 cells using CCL2 antibody (green) and negative control (red).



Red: Control Antigen (100ng) ; Purple: Antigen (10ng) ; Green: Antigen (50ng) ; Blue: Antigen (100ng).

This gene is one of several cytokine genes clustered on the q-arm of chromosome 17. Cytokines are a family of secreted proteins involved in immunoregulatory and inflammatory processes. The protein encoded by this gene is structurally related to the CXC subfamily of cytokines. Members of this subfamily are characterized by two cysteines separated by a single amino acid. This cytokine displays chemotactic activity for monocytes and basophils but not for neutrophils or eosinophils. It has been implicated in the pathogenesis of diseases characterized by monocytic infiltrates, like psoriasis, rheumatoid arthritis and atherosclerosis. It binds to chemokine receptors CCR2 and CCR4.

**Target:** C-C Motif Chemokine 2 / MCP1 (CCL2)

**Clonality:** Monoclonal

**Reactivity:** Human, Mouse, Monkey

**Tested Applications:** ELISA, WB, IHC, IF/ICC, FCM

**Host:** Mouse

**Recommended dilutions:** ELISA: 1/10000, WB: 1/500 - 1/2000, IHC: 1/200 - 1/1000, IF/ICC: 1/200 - 1/1000, FCM: 1/200 - 1/400. Optimal dilutions/concentrations should be determined by the end user.

**Conjugation:** Unconjugated

**Immunogen:** Purified recombinant fragment of human CCL2 expressed in E. coli.

**Isotype:** IgG<sub>1</sub>

**Form:** Liquid

# Datasheet

Version: 6.0.0  
Revision date: 01 May 2025



<b>Purification:</b>	Purified from ascites by Protein G chromatography.
<b>Storage:</b>	Aliquot and store at -20°C. Avoid repeated freeze/thaw cycles.
<b>UniProt Primary AC:</b>	P13500 ( <a href="#">UniProt</a> , <a href="#">ExPASy</a> )
<b>Gene Symbol:</b>	CCL2
<b>GeneID:</b>	<a href="#">6347</a>
<b>OMIM:</b>	<a href="#">158105</a>
<b>NCBI Accession:</b>	NP_002973.1, NM_002982.3
<b>HGNC:</b>	10618
<b>KEGG:</b>	hsa:6347
<b>Ensembl:</b>	ENSG00000108691
<b>String:</b>	<a href="#">9606.ENSP00000225831</a>
<b>Molecular Weight:</b>	11 kDa
<b>Buffer:</b>	PBS, containing 0.05% sodium azide.
<b>Concentration:</b>	1 mg/ml
<b>Note:</b>	THIS PRODUCT IS FOR RESEARCH USE ONLY. NOT FOR USE IN DIAGNOSTIC, THERAPEUTIC OR COSMETIC PROCEDURES. NOT FOR HUMAN OR ANIMAL CONSUMPTION.