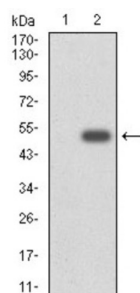
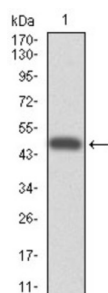


## Cytochrome P450 3A4 (CYP3A4) Antibody

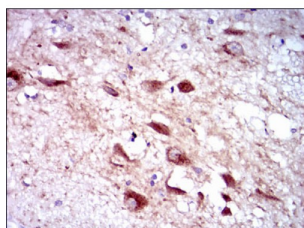
Catalogue No.: abx012231



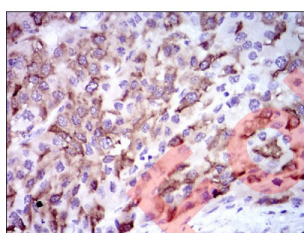
Western blot analysis using CYP3A4 antibody against human CYP3A4 (AA: 243-430) recombinant protein. (Expected MW is 47.5 kDa).



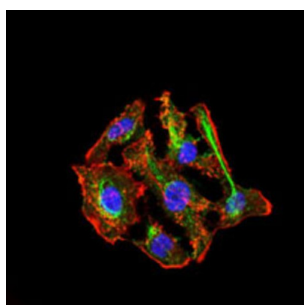
Western blot analysis using CYP3A4 antibody against HEK293 (1) and CYP3A4 (AA: 243-430) -hlgGFc transfected HEK293 (2) cell lysate.



Immunohistochemical analysis of paraffin-embedded liver cancer tissues using CYP3A4 antibody with DAB staining.



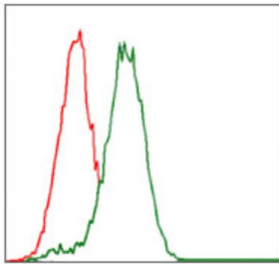
Immunohistochemical analysis of paraffin-embedded human brain tissues using CYP3A4 antibody with DAB staining.



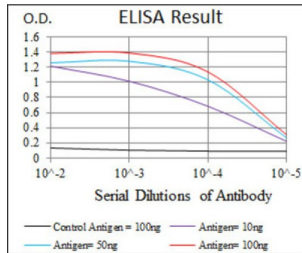
Immunofluorescence analysis of HepG2 cells using CYP3A4 antibody (green). Blue: DRAQ5 fluorescent DNA dye. Red: Actin filaments have been labeled with AF555 phalloidin.

# Datasheet

Version: 3.0.0  
Revision date: 09 Jun 2025



Flow cytometric analysis of HepG2 cells using CYP3A4 antibody (green) and negative control (red).



Red: Control Antigen (100ng) ; Purple: Antigen (10ng) ; Green: Antigen (50ng) ; Blue: Antigen (100ng).

This gene, CYP3A4, encodes a member of the cytochrome P450 superfamily of enzymes. The cytochrome P450 proteins are monooxygenases which catalyze many reactions involved in drug metabolism and synthesis of cholesterol, steroids and other lipids. This protein localizes to the endoplasmic reticulum and its expression is induced by glucocorticoids and some pharmacological agents. This enzyme is involved in the metabolism of approximately half the drugs which are used today, including acetaminophen, codeine, cyclosporin A, diazepam and erythromycin. The enzyme also metabolizes some steroids and carcinogens. This gene is part of a cluster of cytochrome P450 genes on chromosome 7q21.1. Previously another CYP3A gene, CYP3A3, was thought to exist; however, it is now thought that this sequence represents a transcript variant of CYP3A4.

**Target:** Cytochrome P450 3A4 (CYP3A4)

**Clonality:** Monoclonal

**Reactivity:** Human

**Tested Applications:** ELISA, IHC, IF/ICC, FCM

**Host:** Mouse

**Recommended dilutions:** ELISA: 1/10000, IHC: 1/200 - 1/1000, IF/ICC: 1/200 - 1/1000, FCM: 1/200 - 1/400. Optimal dilutions/concentrations should be determined by the end user.

**Conjugation:** Unconjugated

**Immunogen:** Purified recombinant fragment of human CYP3A4 expressed in E. coli.

**Isotype:** IgG<sub>1</sub>

**Form:** Liquid

# Datasheet

Version: 3.0.0  
Revision date: 09 Jun 2025



<b>Purification:</b>	Purified from ascites by Protein G chromatography.
<b>Storage:</b>	Aliquot and store at -20°C. Avoid repeated freeze/thaw cycles.
<b>UniProt Primary AC:</b>	P08684 ( <a href="#">UniProt</a> , <a href="#">ExPASy</a> )
<b>Gene Symbol:</b>	CYP3A4
<b>GeneID:</b>	<a href="#">1576</a>
<b>OMIM:</b>	<a href="#">124010</a>
<b>HGNC:</b>	2637
<b>KEGG:</b>	hsa:1576
<b>Ensembl:</b>	ENSG00000160868
<b>String:</b>	<a href="#">9606.ENSP00000337915</a>
<b>Molecular Weight:</b>	57.3 kDa
<b>Buffer:</b>	PBS, containing 0.05% sodium azide.
<b>Concentration:</b>	1 mg/ml
<b>Note:</b>	THIS PRODUCT IS FOR RESEARCH USE ONLY. NOT FOR USE IN DIAGNOSTIC, THERAPEUTIC OR COSMETIC PROCEDURES. NOT FOR HUMAN OR ANIMAL CONSUMPTION.