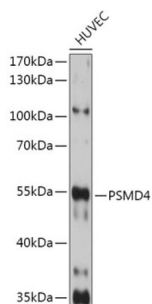
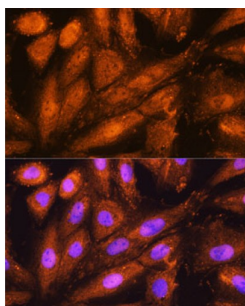


26S Proteasome Non-ATPase Regulatory Subunit 4 (PSMD4) Antibody

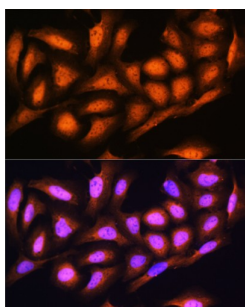
Catalogue No.: abx000984



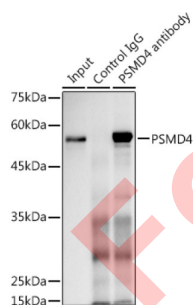
Western blot analysis of lysates from HUVEC cells, using PSMD4 Antibody at 1/1000 dilution. Secondary antibody: HRP-conjugated Goat anti-Rabbit IgG (H+L) at 1/10000 dilution. Lysates/proteins: 25 µg per lane. Blocking buffer: 3% nonfat dry milk in TBST. Exposure time: 90s.



Immunofluorescence analysis of H9C2 cells using PSMD4 Antibody at dilution of 1/100. Secondary antibody: Cy3-conjugated Goat anti-Rabbit IgG (H+L) at 1/500 dilution. Blue: DAPI for nuclear staining.



Immunofluorescence analysis of U2OS cells using PSMD4 Antibody at dilution of 1/100. Secondary antibody: Cy3-conjugated Goat anti-Rabbit IgG (H+L) at 1/500 dilution. Blue: DAPI for nuclear staining.



Immunoprecipitation analysis of 300 µg extracts of MCF7 cells using 3 µg PSMD4 antibody. Western blot was performed from the immunoprecipitate using PSMD4 antibody at a dilution of 1/1000.

PSMD4 Antibody is a Rabbit Polyclonal antibody against PSMD4. The 26S proteasome is a multicatalytic proteinase complex with a highly ordered structure composed of 2 complexes, a 20S core and a 19S regulator. The 20S core is composed of 4 rings of 28 non-identical subunits; 2 rings are composed of 7 alpha subunits and 2 rings are composed of 7 beta subunits. The 19S regulator is composed of a base, which contains 6 ATPase subunits and 2 non-ATPase subunits, and a lid, which contains up to 10 non-ATPase subunits. Proteasomes are distributed throughout eukaryotic cells at a high concentration and cleave peptides in an ATP/ubiquitin-dependent process in a non-lysosomal pathway. An essential function of a modified proteasome, the immunoproteasome, is the processing of class I MHC peptides. This gene encodes one of the non-ATPase subunits of the 19S regulator lid. Pseudogenes have been identified on chromosomes 10 and 21.

Datasheet

Version: 7.0.0
Revision date: 11 Oct 2025



Target:	26S Proteasome Non-ATPase Regulatory Subunit 4 (PSMD4)
Clonality:	Polyclonal
Reactivity:	Human, Rat
Tested Applications:	ELISA, WB, IF/ICC, IP
Host:	Rabbit
Recommended dilutions:	ELISA: 1 µg/ml, WB: 1/500 - 1/2000, IF/ICC: 1/50 - 1/200, IP: 0.5 µg - 4 µg antibody per 200 µg - 400 µg extracts of whole cells. Optimal dilutions/concentrations should be determined by the end user.
Conjugation:	Unconjugated
Immunogen:	Recombinant protein corresponding to PSMD4. The exact sequence is proprietary.
Isotype:	IgG
Form:	Liquid
Purification:	Purified by affinity chromatography.
Storage:	Aliquot and store at -20°C. Avoid repeated freeze/thaw cycles.
UniProt Primary AC:	P55036 (UniProt , ExPASy)
Gene Symbol:	PSMD4
GeneID:	5710
OMIM:	601648
NCBI Accession:	NP_002801.1, NM_002810.2
HGNC:	9561
KEGG:	hsa:5710
Ensembl:	ENSG00000159352
String:	9606.ENSP00000357879
Molecular Weight:	Calculated MW: 41 kDa Observed MW: 50 kDa

Datasheet

Version: 7.0.0

Revision date: 11 Oct 2025



Buffer: PBS, pH 7.3, containing 0.02% sodium azide, 50% glycerol.

Concentration: 3.25 mg/ml

Note: THIS PRODUCT IS FOR RESEARCH USE ONLY. NOT FOR USE IN DIAGNOSTIC, THERAPEUTIC OR COSMETIC PROCEDURES. NOT FOR HUMAN OR ANIMAL CONSUMPTION.

For Reference Only