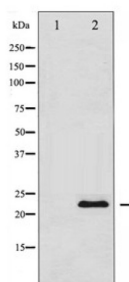


## Metalloproteinase Inhibitor 1 (TIMP1) Antibody

Catalogue No.: abx012249



Western blot analysis of TIMP1 expression in 293 whole cell lysates, The lane on the left is treated with the antigen-specific peptide.

TIMP1 Antibody detects endogenous levels of total TIMP1. TIMP1 Complexes with metalloproteinases (such as collagenases) and irreversibly inactivates them by binding to their catalytic zinc cofactor. Also mediates erythropoiesis in vitro; but, unlike IL-3, it is species-specific, stimulating the growth and differentiation of only human and murine erythroid progenitors. Known to act on MMP-1, MMP-2, MMP-3, MMP-7, MMP-8, MMP-9, MMP-10, MMP-11, MMP-12, MMP-13 and MMP-16.

**Target:** Metalloproteinase Inhibitor 1 (TIMP1)

**Clonality:** Polyclonal

**Reactivity:** Human, Mouse, Rat

**Tested Applications:** WB

**Host:** Rabbit

**Recommended dilutions:** WB: 1/500 - 1/2000. Optimal dilutions/concentrations should be determined by the end user.

**Conjugation:** Unconjugated

**Immunogen:** Synthesised peptide derived from human TIMP1

**Form:** Liquid

**Purification:** Purified by immunogen affinity chromatography.

**Storage:** Aliquot and store at -20°C. Avoid repeated freeze/thaw cycles.

**UniProt Primary AC:** P01033 ([UniProt](#), [ExPASy](#))

**Gene Symbol:** TIMP1

**KEGG:** hsa:7076

# Datasheet

Version: 2.0.0

Revision date: 21 Sep 2025



**Ensembl:** ENSG00000102265

**String:** [9606.ENSP00000218388](#)

**Molecular Weight:** 24 kDa

**Buffer:** PBS, pH 7.4, 150 mM NaCl, 0.02% sodium azide and 50% glycerol.

**Specificity:** TIMP1 Antibody detects endogenous levels of total TIMP1

**Concentration:** 1 mg/ml

**Note:** THIS PRODUCT IS FOR RESEARCH USE ONLY. NOT FOR USE IN DIAGNOSTIC, THERAPEUTIC OR COSMETIC PROCEDURES. NOT FOR HUMAN OR ANIMAL CONSUMPTION.

For Reference Only