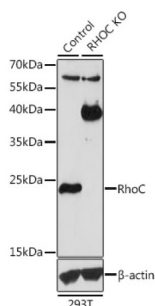
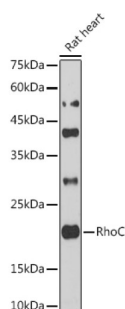


Rho-Related GTP-Binding Protein RhoC (RHOC) Antibody

Catalogue No.: abx000985



Western blot analysis of lysates from wild type (WT) and RhoC knockout (KO) 293T cells, using [KO Validated] RhoC Antibody at 1/1000 dilution. Secondary antibody: HRP-conjugated Goat anti-Rabbit IgG (H+L) at 1/10000 dilution. Lysates/proteins: 25 µg per lane. Blocking buffer: 3% nonfat dry milk in TBST. Exposure time: 300s.



Western blot analysis of lysates from Rat heart, using [KO Validated] RhoC Antibody at 1/1000 dilution. Secondary antibody: HRP-conjugated Goat anti-Rabbit IgG (H+L) at 1/10000 dilution. Lysates/proteins: 25 µg per lane. Blocking buffer: 3% nonfat dry milk in TBST. Exposure time: 90s.

RHOC Antibody is a Rabbit Polyclonal antibody against RHOC. This gene encodes a member of the Rho family of small GTPases, which cycle between inactive GDP-bound and active GTP-bound states and function as molecular switches in signal transduction cascades. Rho proteins promote reorganization of the actin cytoskeleton and regulate cell shape, attachment, and motility. The protein encoded by this gene is prenylated at its C-terminus, and localizes to the cytoplasm and plasma membrane. It is thought to be important in cell locomotion. Overexpression of this gene is associated with tumor cell proliferation and metastasis. Multiple alternatively spliced variants, encoding the same protein, have been identified.

Target: Rho-Related GTP-Binding Protein RhoC (RHOC)

Clonality: Polyclonal

Reactivity: Human, Rat

Tested Applications: ELISA, WB

Host: Rabbit

Recommended dilutions: ELISA: 1 µg/ml, WB: 1/500 - 1/1000. Optimal dilutions/concentrations should be determined by the end user.

Conjugation: Unconjugated

Immunogen: Recombinant protein corresponding to RHOC. The exact sequence is proprietary.

Isotype: IgG

Datasheet

Version: 5.0.0

Revision date: 07 Oct 2025



Form:	Liquid
Purification:	Purified by affinity chromatography.
Storage:	Aliquot and store at -20°C. Avoid repeated freeze/thaw cycles.
UniProt Primary AC:	P08134 (UniProt , ExPASy)
Gene Symbol:	RHOC
GeneID:	389
NCBI Accession:	NP_786886.1
KEGG:	hsa:389
String:	9606.ENSP00000285735
Molecular Weight:	Calculated MW: 22 kDa Observed MW: 22 kDa
Buffer:	PBS, pH 7.3, containing 0.02% sodium azide, 50% glycerol.
Concentration:	> 0.2 mg/ml
Note:	THIS PRODUCT IS FOR RESEARCH USE ONLY. NOT FOR USE IN DIAGNOSTIC, THERAPEUTIC OR COSMETIC PROCEDURES. NOT FOR HUMAN OR ANIMAL CONSUMPTION.