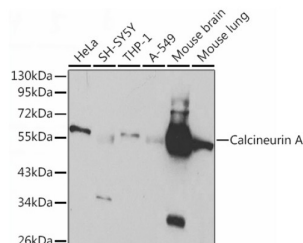
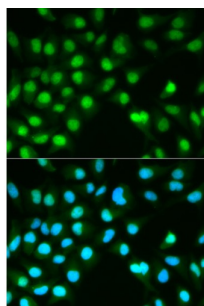


## Protein Phosphatase 3 Catalytic Subunit Alpha (PPP3CA) Antibody

Catalogue No.: abx000986



Western blot analysis of various lysates using Calcineurin A Antibody at 1/1000 dilution. Secondary antibody: HRP-conjugated Goat anti-Rabbit IgG (H+L) at 1/10000 dilution. Lysates/proteins: 25 µg per lane. Blocking buffer: 3% nonfat dry milk in TBST.



Immunofluorescence analysis of HeLa cells using Calcineurin A Antibody. Secondary antibody: Cy3-conjugated Goat anti-Rabbit IgG (H+L) at 1/500 dilution. Blue: DAPI for nuclear staining.

PPP3CA Antibody is a Rabbit Polyclonal antibody against PPP3CA. In eukaryotes, the phosphorylation and dephosphorylation of proteins on serine and threonine residues is an essential means of regulating a broad range of cellular functions including division, homeostasis and apoptosis. A group of proteins that are intimately involved in this process are the protein phosphatases. In general, the protein phosphatase (PP) holoenzyme is a trimeric complex composed of a regulatory subunit, a variable subunit and a catalytic subunit. Four major families of protein phosphatase catalytic subunit have been identified, designated PP1, PP2A, PP2B and PP2C. An additional protein phosphatase catalytic subunit, PPX (also known as PP4), is a putative member of a novel PP family. The PP2B family comprises subfamily members PP2B-A $\alpha$ , PP2B-A $\beta$  and PP2B-A $\gamma$ . Two additional regulatory subunits have been identified, designated PP2B-B1 and PP2B-B2.

**Target:** Protein Phosphatase 3 Catalytic Subunit Alpha (PPP3CA)

**Clonality:** Polyclonal

**Reactivity:** Human, Mouse

**Tested Applications:** ELISA, WB, IF/ICC

**Host:** Rabbit

**Recommended dilutions:** ELISA: 1 µg/ml, WB: 1/500 - 1/2000, IF/ICC: 1/50 - 1/200. Optimal dilutions/concentrations should be determined by the end user.

**Conjugation:** Unconjugated

**Immunogen:** Recombinant fusion protein containing a sequence corresponding to amino acids 1-511 of human Calcineurin A.

# Datasheet

Version: 4.0.0

Revision date: 10 Sep 2025



Isotype:	IgG
Form:	Liquid
Purification:	Purified by affinity chromatography.
Storage:	Aliquot and store at -20°C. Avoid repeated freeze/thaw cycles.
UniProt Primary AC:	Q08209 ( <a href="#">UniProt</a> , <a href="#">ExPASy</a> )
Gene Symbol:	PPP3CA
GeneID:	<a href="#">5530</a>
NCBI Accession:	NP_001124163.1
Molecular Weight:	Calculated MW: 59 kDa Observed MW: 57 kDa
Buffer:	PBS, pH 7.3, containing 0.02% sodium azide, 50% glycerol.
Concentration:	> 0.2 mg/ml
Note:	THIS PRODUCT IS FOR RESEARCH USE ONLY. NOT FOR USE IN DIAGNOSTIC, THERAPEUTIC OR COSMETIC PROCEDURES. NOT FOR HUMAN OR ANIMAL CONSUMPTION.