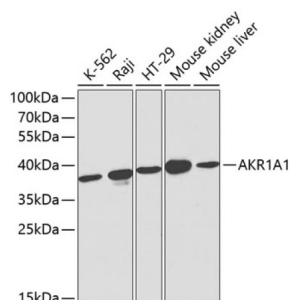


## Aldo-Keto Reductase Family 1 Member A1 (AKR1A1) Antibody

Catalogue No.: abx000991



Western blot analysis of extracts of various cell lines using AKR1A1 Antibody (1/1000 dilution).

Aldo-Keto Reductase Family 1 Member A1 (AKR1A1) Antibody is a Rabbit Polyclonal antibody against Aldo-Keto Reductase Family 1 Member A1 (AKR1A1). This gene encodes a member of the aldo/keto reductase superfamily, which consists of more than 40 known enzymes and proteins. This member, also known as aldehyde reductase, is involved in the reduction of biogenic and xenobiotic aldehydes and is present in virtually every tissue. Multiple alternatively spliced transcript variants of this gene exist, all encoding the same protein. [provided by RefSeq, Jan 2011].

**Target:** Aldo-Keto Reductase Family 1 Member A1 (AKR1A1)

**Clonality:** Polyclonal

**Reactivity:** Human, Mouse, Rat

**Tested Applications:** WB

**Host:** Rabbit

**Recommended dilutions:** WB: 1/500 - 1/2000. Optimal dilutions/concentrations should be determined by the end user.

**Conjugation:** Unconjugated

**Immunogen:** Recombinant fusion protein corresponding to human AKR1A1

**Isotype:** IgG

**Form:** Liquid

**Purification:** Purified by affinity chromatography.

**Storage:** Aliquot and store at -20°C. Avoid repeated freeze/thaw cycles.

**UniProt Primary AC:** P14550 ([UniProt](#), [ExPASy](#))

# Datasheet

Version: 3.0.0

Revision date: 05 Oct 2025



**Gene Symbol:** AKR1A1

**GeneID:** [10327](#)

**NCBI Accession:** NP\_006057.1

**KEGG:** hsa:10327

**String:** [9606.ENSP00000361140](#)

**Molecular Weight:** Calculated MW: 36 kDa  
Observed MW: 37 kDa

**Buffer:** PBS, pH 7.3, containing 0.02% sodium azide, 50% glycerol.

**Concentration:** 1 mg/ml

**Note:** THIS PRODUCT IS FOR RESEARCH USE ONLY. NOT FOR USE IN DIAGNOSTIC, THERAPEUTIC OR COSMETIC PROCEDURES. NOT FOR HUMAN OR ANIMAL CONSUMPTION.

For Reference Only