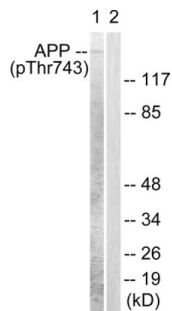
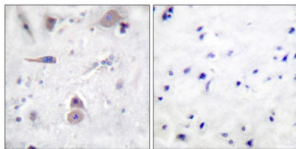


Amyloid beta A4 (Phospho-Thr743 / 668) Antibody

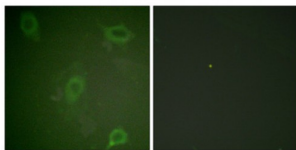
Catalogue No.: abx012402



Western blot analysis of extracts from HeLa cells, using Amyloid beta A4 (phospho-Thr743/668) antibody.



Immunohistochemical analysis of paraffin-embedded human brain tissue using Amyloid beta A4 (phospho-Thr743/668) antibody.



Immunofluorescence analysis of HeLa cells, using Amyloid beta A4 (phospho-Thr743/668) antibody.

Rabbit polyclonal antibody against Amyloid beta A4 protein. Immunogen region is C-terminal. Specificity is as follows for the reactive species: H:T743, M:T743, R:T743.

Target: Amyloid beta A4

Clonality: Polyclonal

Reactivity: Human, Mouse, Rat

Tested Applications: ELISA, WB, IHC, IF/ICC

Host: Rabbit

Recommended dilutions: WB: 1/500 - 1/3000, IHC: 1/50 - 1/100, IF/ICC: 1/100 - 1/500, ELISA: 1/10000. Optimal dilutions/concentrations should be determined by the end user.

Datasheet

Version: 4.0.0
Revision date: 24 Jun 2025



Conjugation:	Unconjugated
Immunogen:	The antiserum was produced against synthesized phosphopeptide derived from human Amyloid beta A4 around the phosphorylation site of threonine 743 (A-V-TP-P-E).
Isotype:	IgG
Form:	Liquid
Purification:	Purified from rabbit antiserum by affinity chromatography using epitope-specific immunogen.
Storage:	Aliquot and store at -20°C. Avoid repeated freeze/thaw cycles.
UniProt Primary AC:	P05067 (UniProt , ExPASy)
Sequence:	CEVDAAVTPEERHL
Buffer:	PBS (without Mg^{2+} and Ca^{2+}), pH 7.4, 150 mM NaCl, 0.02% sodium azide, 50% glycerol.
Concentration:	1 mg/ml
Note:	THIS PRODUCT IS FOR RESEARCH USE ONLY. NOT FOR USE IN DIAGNOSTIC, THERAPEUTIC OR COSMETIC PROCEDURES. NOT FOR HUMAN OR ANIMAL CONSUMPTION.