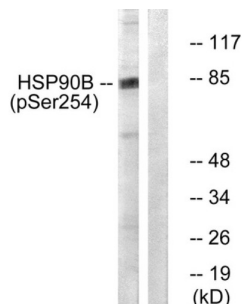
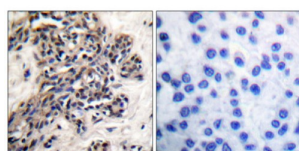


Heat Shock Protein 90 kDa Beta Phospho-Ser254 (HSP90B pS254) Antibody

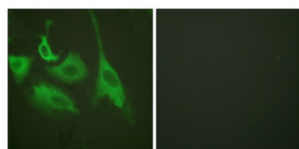
Catalogue No.: abx012405



Western blot analysis of extracts from HeLa cells treated with TNF-alpha (10 ng/ml, 30mins), using HSP90B (phospho-Ser254) antibody. The lane on the right is blocked with the phosphopeptide.



Immunohistochemical analysis of paraffin-embedded Human breast carcinoma tissue, using HSP90B (phospho-Ser254) antibody.



Immunofluorescence analysis of HeLa cells, treated with TNF-a (20nM, 15mins), using HSP90B (phospho-Ser254) antibody. The picture on the right is blocked with the phosphopeptide.

Rabbit polyclonal antibody against HSP90B protein. Immunogen region is Internal. Specificity is as follows for the reactive species: H:S254, M:S254, R:S254.

Target: Heat Shock Protein 90 kDa Beta Phospho-Ser254 (HSP90B pS254)

Clonality: Polyclonal

Target Modification: Ser254

Modification: Phosphorylation

Reactivity: Human, Mouse, Rat

Tested Applications: ELISA, WB, IHC, IF/ICC

Datasheet

Version: 5.0.0
Revision date: 12 Jun 2025



Host:	Rabbit
Recommended dilutions:	ELISA: 1/40000, WB: 1/500 - 1/3000, IHC: 1/50 - 1/100, IF/ICC: 1/100 - 1/500. Optimal dilutions/concentrations should be determined by the end user.
Conjugation:	Unconjugated
Immunogen:	The antiserum was produced against synthesized phosphopeptide derived from Human HSP90B around the phosphorylation site of serine 254 (V-G-S ^P -D-E).
Isotype:	IgG
Form:	Liquid
Purification:	Purified from Rabbit antiserum by affinity chromatography using epitope-specific phosphopeptide. The antibody against non-phosphopeptide was removed by chromatography using non-phosphopeptide corresponding to the phosphorylation site.
Storage:	Aliquot and store at -20°C. Avoid repeated freeze/thaw cycles.
UniProt Primary AC:	P08238 (UniProt , ExPASy)
KEGG:	hsa:3326
String:	9606.ENSP00000360609
Buffer:	PBS (without Mg ²⁺ and Ca ²⁺), pH 7.4, 150 mM NaCl, 0.02% sodium azide, 50% glycerol.
Specificity:	Detects endogenous levels of HSP90B only when phosphorylated at serine 254.
Concentration:	1 mg/ml
Note:	THIS PRODUCT IS FOR RESEARCH USE ONLY. NOT FOR USE IN DIAGNOSTIC, THERAPEUTIC OR COSMETIC PROCEDURES. NOT FOR HUMAN OR ANIMAL CONSUMPTION.