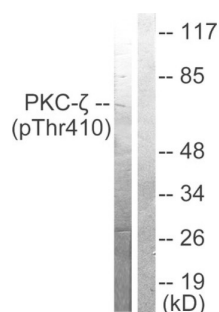
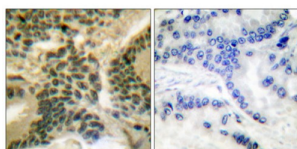


## PKC zeta (Phospho-Thr410) Antibody

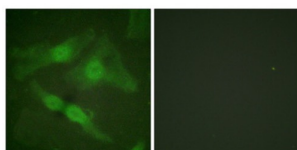
Catalogue No.: abx012406



Western blot analysis of extracts from NIH/3T3 cells treated with PMA (125ng/ml, 30mins), using PKC zeta (phospho-Thr410) antibody.



Immunohistochemical analysis of paraffin-embedded human lung carcinoma tissue using PKC zeta (phospho-Thr410) antibody.



Immunofluorescence analysis of HeLa cells, using PKC zeta (phospho-Thr410) antibody.

Rabbit polyclonal antibody against PKC zeta protein. Immunogen region is Internal. Specificity is as follows for the reactive species: H:T410, M:T410, R:T410.

**Target:** PKC zeta

**Clonality:** Polyclonal

**Reactivity:** Human, Mouse, Rat

**Tested Applications:** ELISA, WB, IHC, IF/ICC

**Host:** Rabbit

**Recommended dilutions:** WB: 1/500 - 1000, IHC: 1/50 - 100, IF/ICC: 1/100 - 1/500, ELISA: 1/20000. Optimal dilutions/concentrations should be determined by the end user.

# Datasheet

Version: 2.0.0  
Revision date: 28 Jun 2025



<b>Conjugation:</b>	Unconjugated
<b>Immunogen:</b>	The antiserum was produced against synthesized phosphopeptide derived from human PKC zeta around the phosphorylation site of threonine 410 (T-S-TP-F-C).
<b>Isotype:</b>	IgG
<b>Form:</b>	Liquid
<b>Purification:</b>	Purified from rabbit antiserum by affinity chromatography using epitope-specific immunogen.
<b>Storage:</b>	Aliquot and store at -20°C. Avoid repeated freeze/thaw cycles.
<b>UniProt Primary AC:</b>	Q05513 ( <a href="#">UniProt</a> , <a href="#">ExPASy</a> )
<b>KEGG:</b>	hsa:5590
<b>String:</b>	<a href="#">9606.ENSP00000367830</a>
<b>Enzyme Commission Number:</b>	EC 2.7.11.13
<b>Sequence:</b>	PGDTTSTFCGTPN
<b>Buffer:</b>	PBS (without $Mg^{2+}$ and $Ca^{2+}$ ), pH 7.4, 150 mM NaCl, 0.02% sodium azide, 50% glycerol.
<b>Concentration:</b>	1 mg/ml
<b>Note:</b>	THIS PRODUCT IS FOR RESEARCH USE ONLY. NOT FOR USE IN DIAGNOSTIC, THERAPEUTIC OR COSMETIC PROCEDURES. NOT FOR HUMAN OR ANIMAL CONSUMPTION.