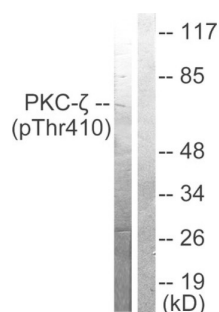
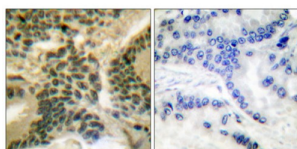


PKC zeta (Phospho-Thr410) Antibody

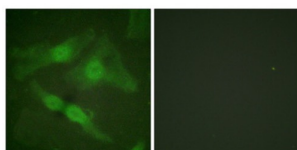
Catalogue No.: abx012406



Western blot analysis of extracts from NIH/3T3 cells treated with PMA (125ng/ml, 30mins), using PKC zeta (phospho-Thr410) antibody.



Immunohistochemical analysis of paraffin-embedded human lung carcinoma tissue using PKC zeta (phospho-Thr410) antibody.



Immunofluorescence analysis of HeLa cells, using PKC zeta (phospho-Thr410) antibody.

Rabbit polyclonal antibody against PKC zeta protein. Immunogen region is Internal. Specificity is as follows for the reactive species: H:T410, M:T410, R:T410.

Target: PKC zeta

Clonality: Polyclonal

Reactivity: Human, Mouse, Rat

Tested Applications: ELISA, WB, IHC, IF/ICC

Host: Rabbit

Recommended dilutions: WB: 1/500 - 1000, IHC: 1/50 - 100, IF/ICC: 1/100 - 1/500, ELISA: 1/20000. Optimal dilutions/concentrations should be determined by the end user.

Datasheet

Version: 2.0.0
Revision date: 24 Jun 2025



Conjugation:	Unconjugated
Immunogen:	The antiserum was produced against synthesized phosphopeptide derived from human PKC zeta around the phosphorylation site of threonine 410 (T-S-TP-F-C).
Isotype:	IgG
Form:	Liquid
Purification:	Purified from rabbit antiserum by affinity chromatography using epitope-specific immunogen.
Storage:	Aliquot and store at -20°C. Avoid repeated freeze/thaw cycles.
UniProt Primary AC:	Q05513 (UniProt , ExPASy)
KEGG:	hsa:5590
String:	9606.ENSP00000367830
Enzyme Commission Number:	EC 2.7.11.13
Sequence:	PGDTTSTFCGTPN
Buffer:	PBS (without Mg ²⁺ and Ca ²⁺), pH 7.4, 150 mM NaCl, 0.02% sodium azide, 50% glycerol.
Concentration:	1 mg/ml
Note:	THIS PRODUCT IS FOR RESEARCH USE ONLY. NOT FOR USE IN DIAGNOSTIC, THERAPEUTIC OR COSMETIC PROCEDURES. NOT FOR HUMAN OR ANIMAL CONSUMPTION.