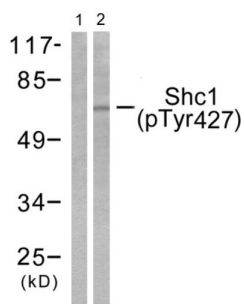
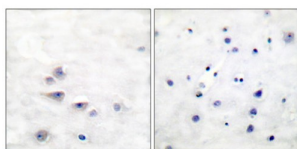


## SHC-Transforming Protein 1 Phospho-Tyr427 (SHC1 pY427) Antibody

Catalogue No.: abx012408



Western blot analysis of extracts from Hela cells treated with Calyculin A (50ng/ml, 15mins), using Shc (phospho-Tyr427) antibody.



Immunohistochemical analysis of paraffin-embedded human brain tissue using Shc (phospho-Tyr427) antibody.

Rabbit polyclonal antibody against Shc protein. Immunogen region is Internal. Specificity is as follows for the reactive species: H:Y427, M:Y423, R:Y313.

**Target:** SHC-Transforming Protein 1 Phospho-Tyr427 (SHC1 pY427)

**Clonality:** Polyclonal

**Target Modification:** Tyr427

**Modification:** Phosphorylation

**Reactivity:** Human, Mouse, Rat

**Tested Applications:** ELISA, WB, IHC

**Host:** Rabbit

**Recommended dilutions:** WB: 1/500 - 3000, IHC: 1/50 - 100, ELISA: 1/10000. Optimal dilutions/concentrations should be determined by the end user.

**Conjugation:** Unconjugated

**Immunogen:** The antiserum was produced against synthesized phosphopeptide derived from human Shc around the phosphorylation site of tyrosine 427 (P-S-YP-V-N).

# Datasheet

Version: 3.0.0  
Revision date: 13 Jul 2025



Isotype:	IgG
Form:	Liquid
Purification:	Purified from rabbit antiserum by affinity chromatography using epitope-specific immunogen.
Storage:	Aliquot and store at -20°C. Avoid repeated freeze/thaw cycles.
UniProt Primary AC:	P29353 ( <a href="#">UniProt</a> , <a href="#">ExPASy</a> )
KEGG:	hsa:6464
String:	<a href="#">9606.ENSP00000401303</a>
Sequence:	CLFDDPSYVNVQNL
Buffer:	PBS (without $Mg^{2+}$ and $Ca^{2+}$ ), pH 7.4, 150 mM NaCl, 0.02% sodium azide, 50% glycerol.
Concentration:	1 mg/ml
Note:	THIS PRODUCT IS FOR RESEARCH USE ONLY. NOT FOR USE IN DIAGNOSTIC, THERAPEUTIC OR COSMETIC PROCEDURES. NOT FOR HUMAN OR ANIMAL CONSUMPTION.

For Reference Only