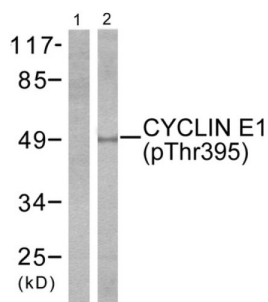
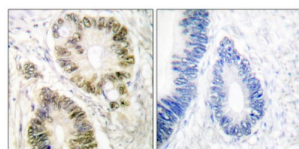


G1/S-Specific Cyclin-E1 Phospho-Thr395 (CCNE1 pT395) Antibody

Catalogue No.: abx012423



Western blot analysis of extracts from HeLa cells, treated with Paclitaxel (1uM, 60mins), using Cyclin E1 (phospho-Thr395) antibody.



Immunohistochemical analysis of paraffin-embedded human colon carcinoma tissue using Cyclin E1 (phospho-Thr395) antibody.

G1/S-Specific Cyclin-E1 Phospho-Thr395 (CCNE1 pT395) Antibody is a rabbit polyclonal antibody against G1/S-Specific Cyclin-E1 Phospho-Thr395 (CCNE1 pT395). Immunogen region is C-terminal. Specificity is as follows for the reactive species: H:T395.

Target: G1/S-Specific Cyclin-E1 Phospho-Thr395 (CCNE1 pT395)

Clonality: Polyclonal

Target Modification: Thr395

Modification: Phosphorylation

Reactivity: Human

Tested Applications: ELISA, WB, IHC

Host: Rabbit

Recommended dilutions: WB: 1/500 - 1/3000, IHC: 1/50 - 1/100, ELISA: 1/10000. Optimal dilutions/concentrations should be determined by the end user.

Conjugation: Unconjugated

Immunogen: The antiserum was produced against synthesized phosphopeptide derived from human Cyclin E1 around the phosphorylation site of threonine 395 (L-L-TP-P-P).

Datasheet

Version: 4.0.0
Revision date: 19 Jun 2025



Isotype:	IgG
Form:	Liquid
Purification:	Purified from rabbit antiserum by affinity chromatography using epitope-specific immunogen.
Storage:	Aliquot and store at -20°C. Avoid repeated freeze/thaw cycles.
UniProt Primary AC:	P24864 (UniProt , ExPASy)
KEGG:	hsa:898
String:	9606.ENSP00000262643
Sequence:	CLPSGLLTPPQSGK
Buffer:	PBS (without Mg^{2+} and Ca^{2+}), pH 7.4, 150 mM NaCl, 0.02% sodium azide, 50% glycerol.
Concentration:	1 mg/ml
Note:	THIS PRODUCT IS FOR RESEARCH USE ONLY. NOT FOR USE IN DIAGNOSTIC, THERAPEUTIC OR COSMETIC PROCEDURES. NOT FOR HUMAN OR ANIMAL CONSUMPTION.