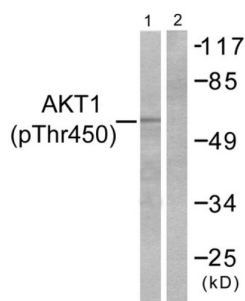
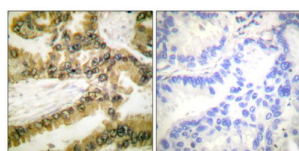


RAC-Alpha Serine/Threonine-Protein Kinase Phospho-Thr450 (AKT1 pT450) Antibody

Catalogue No.: abx012427



Western blot analysis of extracts from NIH/3T3 cells, treated with PDGF (50ng/ml, 20mins), using Akt (Phospho-Thr450) antibody.



Immunohistochemistry analysis of paraffin-embedded human lung carcinoma tissue, using Akt (Phospho-Thr450) antibody.

Rabbit polyclonal antibody against Akt1 protein. Immunogen region is C-terminal. Specificity is as follows for the reactive species: H:T450, M:T450, R:T450.

Target:	RAC-Alpha Serine/Threonine-Protein Kinase Phospho-Thr450 (AKT1 pT450)
Clonality:	Polyclonal
Target Modification:	Thr450
Modification:	Phosphorylation
Reactivity:	Human, Mouse, Rat
Tested Applications:	ELISA, WB, IHC
Host:	Rabbit
Recommended dilutions:	WB: 1/500 - 1/3000, IHC: 1/50 - 1/100, ELISA: 1/1000. Optimal dilutions/concentrations should be determined by the end user.
Conjugation:	Unconjugated
Immunogen:	The antiserum was produced against synthesized phosphopeptide derived from human AKT1 around the phosphorylation site of threonine 450 (T-I-TP-P-P).

Datasheet

Version: 2.0.0

Revision date: 03 May 2025



Isotype:	IgG
Form:	Liquid
Purification:	Purified from rabbit antiserum by affinity chromatography using epitope-specific immunogen.
Storage:	Aliquot and store at -20°C. Avoid repeated freeze/thaw cycles.
UniProt Primary AC:	P31749 (UniProt , ExPASy)
KEGG:	hsa:207
String:	9606.ENSP00000451828
Enzyme Commission Number:	EC 2.7.11.1
Sequence:	CAQMITITPPDQDD
Buffer:	PBS (without Mg^{2+} and Ca^{2+}), pH 7.4, 150 mM NaCl, 0.02% sodium azide, 50% glycerol.
Concentration:	1 mg/ml
Note:	THIS PRODUCT IS FOR RESEARCH USE ONLY. NOT FOR USE IN DIAGNOSTIC, THERAPEUTIC OR COSMETIC PROCEDURES. NOT FOR HUMAN OR ANIMAL CONSUMPTION.