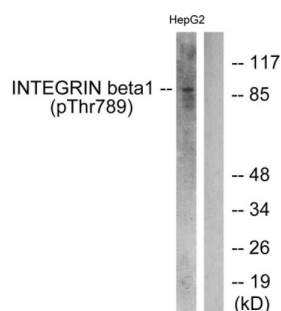
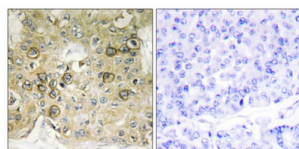


Integrin Beta 1 Phospho-Thr789 (ITGB1 pT789) Antibody

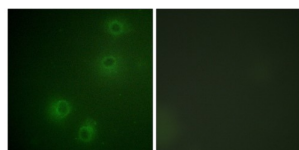
Catalogue No.: abx012440



Western blot analysis of extracts from HepG2 cells, treated with Ca^{2+} (40 μM , 30 mins), using ITGB1 pT789 antibody. The lane on the right is blocked with the phosphopeptide.



Immunohistochemistry analysis of paraffin-embedded human breast carcinoma tissue, using ITGB1 pT789 antibody. The picture on the right is blocked with the phosphopeptide.



Immunofluorescence analysis of COS-7 cells, using ITGB1 pT789 antibody. The picture on the right is blocked with the phosphopeptide.

Rabbit polyclonal antibody against Integrin beta 1 protein when phosphorylated at Thr789. Immunogen region is C-terminal. Specificity is as follows for the reactive species: H:T789, M:T789, R:T790.

Target: Integrin Beta 1 Phospho-Thr789 (ITGB1 pT789)

Clonality: Polyclonal

Target Modification: Thr789

Modification: Phosphorylation

Reactivity: Human, Mouse, Rat

Tested Applications: ELISA, WB, IHC, IF/ICC

Datasheet

Version: 7.0.0
Revision date: 06 Oct 2025



Host:	Rabbit
Recommended dilutions:	ELISA: 1/1000, WB: 1/500 - 1/3000, IHC: 1/50 - 1/100, IF/ICC: 1/100 - 1/500. Optimal dilutions/concentrations should be determined by the end user.
Conjugation:	Unconjugated
Immunogen:	The antiserum was produced against synthesized phosphopeptide derived from human Integrin beta 1 around the phosphorylation site of threonine 789 (V-T-T ^P -V-V).
Isotype:	IgG
Form:	Liquid
Purification:	Purified from rabbit antiserum by affinity chromatography using epitope-specific phosphopeptide. The antibody against non-phosphopeptide was removed by chromatography using non-phosphopeptide corresponding to the phosphorylation site.
Storage:	Aliquot and store at -20°C. Avoid repeated freeze/thaw cycles.
UniProt Primary AC:	P05556 (UniProt , ExPASy)
KEGG:	hsa:3688
String:	9606.ENSP00000379350
Sequence:	CYKSAVTTVVNPK
Buffer:	PBS (without Mg ²⁺ and Ca ²⁺), pH 7.4, 150 mM NaCl, 0.02% sodium azide, 50% glycerol.
Specificity:	Detects endogenous levels of Integrin Beta 1 only when phosphorylated at threonine 789.
Concentration:	1 mg/ml
Note:	THIS PRODUCT IS FOR RESEARCH USE ONLY. NOT FOR USE IN DIAGNOSTIC, THERAPEUTIC OR COSMETIC PROCEDURES. NOT FOR HUMAN OR ANIMAL CONSUMPTION.