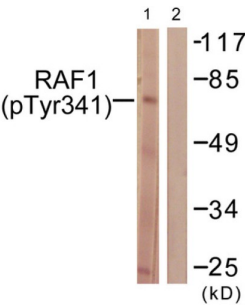
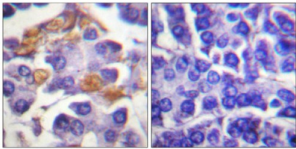


C-RAF (Phospho-Tyr341) Antibody

Catalogue No.:abx012449



Western blot analysis of extracts from Jurkat cells, treated with Paclitaxel (1uM, 24hours), using Raf1 (Phospho-Tyr341) antibody.



Immunohistochemistry analysis of paraffin-embedded human pancreas tissue using Raf1 (Phospho-Tyr341) antibody.

Rabbit polyclonal antibody against C-RAF protein. Immunogen region is Internal. Specificity is as follows for the reactive species: H:Y341, M:Y341, R:Y341.

Target:	C-RAF
Clonality:	Polyclonal
Reactivity:	Human, Mouse, Rat
Tested Applications:	ELISA, WB, IHC
Host:	Rabbit
Recommended dilutions:	WB: 1/500 - 1/3000, IHC: 1/50 - 1/100, ELISA: 1/1000. Optimal dilutions/concentrations should be determined by the end user.
Conjugation:	Unconjugated
Immunogen:	The antiserum was produced against synthesized phosphopeptide derived from human Raf1 around the phosphorylation site of tyrosine 341 (S-Y-YP-W-E).
Isotype:	IgG
Form:	Liquid

Datasheet

Version: 4.0.0
Revision date: 27 Aug 2025



Purification:	Purified from rabbit antiserum by affinity chromatography using epitope-specific immunogen.
Storage:	Aliquot and store at -20°C. Avoid repeated freeze/thaw cycles.
UniProt Primary AC:	P04049 (UniProt , ExPASy)
KEGG:	hsa:5894
String:	9606.ENSP00000251849
Enzyme Commission Number:	EC 2.7.11.1
Sequence:	CQRDSSYYWEIEAS
Buffer:	PBS (without Mg ²⁺ and Ca ²⁺), pH 7.4, 150 mM NaCl, 0.02% sodium azide, 50% glycerol.
Concentration:	1 mg/ml
Note:	THIS PRODUCT IS FOR RESEARCH USE ONLY. NOT FOR USE IN DIAGNOSTIC, THERAPEUTIC OR COSMETIC PROCEDURES. NOT FOR HUMAN OR ANIMAL CONSUMPTION.

For Reference Only