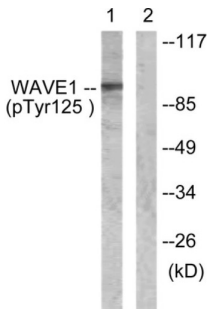
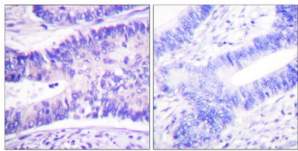


WAVE1 (Phospho-Tyr125) Antibody

Catalogue No.: abx012452



Western blot analysis of extracts from NIH/3T3 cells, treated with Insulin (0.01U/ml, 15mins), using WAVE1 (Phospho-Tyr125) antibody.



Immunohistochemistry analysis of paraffin-embedded human colon carcinoma tissue using WAVE1 (Phospho-Tyr125) antibody.

Rabbit polyclonal antibody against WAVE1 protein. Immunogen region is Internal. Specificity is as follows for the reactive species: H:Y125, M:Y125, R:Y125.

Target:	WAVE1
Clonality:	Polyclonal
Reactivity:	Human, Mouse, Rat
Tested Applications:	ELISA, WB, IHC
Host:	Rabbit
Recommended dilutions:	WB: 1/500 - 1/3000, IHC: 1/50 - 1/100, ELISA: 1/1000. Optimal dilutions/concentrations should be determined by the end user.
Conjugation:	Unconjugated
Immunogen:	The antiserum was produced against synthesized phosphopeptide derived from human WAVE1 around the phosphorylation site of tyrosine 125 (E-T-YP-D-V).
Isotype:	IgG
Form:	Liquid

Datasheet

Version: 3.0.0
Revision date: 29 Aug 2025



Purification:	Purified from rabbit antiserum by affinity chromatography using epitope-specific immunogen.
Storage:	Aliquot and store at -20°C. Avoid repeated freeze/thaw cycles.
UniProt Primary AC:	Q92558 (UniProt , ExPASy)
KEGG:	hsa:8936
String:	9606.ENSP00000376368
Sequence:	IPLQETYDVCEQP
Buffer:	PBS (without Mg ²⁺ and Ca ²⁺), pH 7.4, 150 mM NaCl, 0.02% sodium azide, 50% glycerol.
Concentration:	1 mg/ml
Note:	THIS PRODUCT IS FOR RESEARCH USE ONLY. NOT FOR USE IN DIAGNOSTIC, THERAPEUTIC OR COSMETIC PROCEDURES. NOT FOR HUMAN OR ANIMAL CONSUMPTION.

For Reference Only