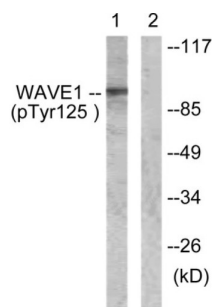
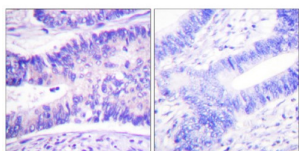


WAVE1 (Phospho-Tyr125) Antibody

Catalogue No.: abx012452



Western blot analysis of extracts from NIH/3T3 cells, treated with Insulin (0.01U/ml, 15mins), using WAVE1 (Phospho-Tyr125) antibody.



Immunohistochemistry analysis of paraffin-embedded human colon carcinoma tissue using WAVE1 (Phospho-Tyr125) antibody.

Rabbit polyclonal antibody against WAVE1 protein. Immunogen region is Internal. Specificity is as follows for the reactive species: H:Y125, M:Y125, R:Y125.

Target: WAVE1

Clonality: Polyclonal

Reactivity: Human, Mouse, Rat

Tested Applications: ELISA, WB, IHC

Host: Rabbit

Recommended dilutions: WB: 1/500 - 1/3000, IHC: 1/50 - 1/100, ELISA: 1/1000. Optimal dilutions/concentrations should be determined by the end user.

Conjugation: Unconjugated

Immunogen: The antiserum was produced against synthesized phosphopeptide derived from human WAVE1 around the phosphorylation site of tyrosine 125 (E-T-YP-D-V).

Isotype: IgG

Form: Liquid

Datasheet

Version: 3.0.0
Revision date: 16 Mar 2025



| | |
|----------------------------|--------------------------------------------------------------------------------------------------------------------------------------------|
| Purification: | Purified from rabbit antiserum by affinity chromatography using epitope-specific immunogen. |
| Storage: | Aliquot and store at -20°C. Avoid repeated freeze/thaw cycles. |
| UniProt Primary AC: | Q92558 (UniProt , ExPASy) |
| KEGG: | hsa:8936 |
| String: | 9606.ENSP00000376368 |
| Sequence: | IPLQETYDVCEQP |
| Buffer: | PBS (without Mg ²⁺ and Ca ²⁺), pH 7.4, 150 mM NaCl, 0.02% sodium azide, 50% glycerol. |
| Concentration: | 1 mg/ml |
| Note: | THIS PRODUCT IS FOR RESEARCH USE ONLY. NOT FOR USE IN DIAGNOSTIC, THERAPEUTIC OR COSMETIC PROCEDURES. NOT FOR HUMAN OR ANIMAL CONSUMPTION. |

For Reference Only