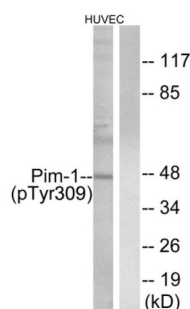


Pim-1 (Phospho-Tyr309) Antibody

Catalogue No.: abx012463



Western blot analysis of extracts from HUVEC cells, treated with PMA (125ng/ml, 30mins), using Pim-1 (Phospho-Tyr309) antibody.

Rabbit polyclonal antibody against Pim-1 protein. Immunogen region is Internal. Specificity is as follows for the reactive species: H:Y309, M:Y302, R:Y218.

Target:	Pim-1
Clonality:	Polyclonal
Reactivity:	Human, Mouse, Rat
Tested Applications:	ELISA, WB
Host:	Rabbit
Recommended dilutions:	WB: 1/500 - 1/3000, ELISA: 1/40000. Optimal dilutions/concentrations should be determined by the end user.
Conjugation:	Unconjugated
Immunogen:	The antiserum was produced against synthesized phosphopeptide derived from human Pim-1 around the phosphorylation site of tyrosine 309 (H-R-YP-H-G).
Isotype:	IgG
Form:	Liquid
Purification:	Purified from rabbit antiserum by affinity chromatography using epitope-specific immunogen.
Storage:	Aliquot and store at -20°C. Avoid repeated freeze/thaw cycles.
UniProt Primary AC:	P11309 (UniProt , ExPASy)
KEGG:	hsa:5292

Datasheet

Version: 3.0.0

Revision date: 09 Oct 2025



String: [9606.ENSF00000362608](#)

Enzyme Commission Number: EC 2.7.11.1

Buffer: PBS (without Mg^{2+} and Ca^{2+}), pH 7.4, 150 mM NaCl, 0.02% sodium azide, 50% glycerol.

Concentration: 1 mg/ml

Note: THIS PRODUCT IS FOR RESEARCH USE ONLY. NOT FOR USE IN DIAGNOSTIC, THERAPEUTIC OR COSMETIC PROCEDURES. NOT FOR HUMAN OR ANIMAL CONSUMPTION.

For Reference Only