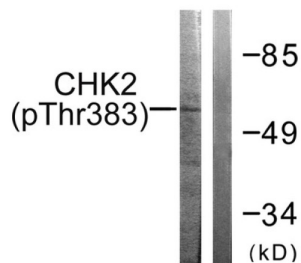
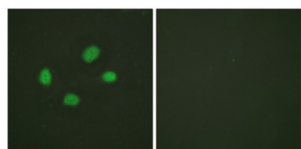


Serine/Threonine-Protein Kinase CHK2 Phospho-Thr383 (CHEK2 pT383) Antibody

Catalogue No.: abx012469



Western blot analysis of extracts from COS7 cells, treated with UV (30mins), using Chk2 (Phospho-Thr383) antibody.



Immunofluorescence analysis of HeLa cells, using Chk2 (Phospho-Thr383) antibody.

Rabbit polyclonal antibody against Chk2 protein. Immunogen region is Internal. Specificity is as follows for the reactive species: H:T383, M:T387, R:T386.

Target:	Serine/Threonine-Protein Kinase CHK2 Phospho-Thr383 (CHEK2 pT383)
Clonality:	Polyclonal
Target Modification:	Thr383
Modification:	Phosphorylation
Reactivity:	Human, Mouse, Rat
Tested Applications:	ELISA, WB, IF/ICC
Host:	Rabbit
Recommended dilutions:	WB: 1/500 - 1/3000, IF/ICC: 1/100 - 1/500, ELISA: 1/20000. Optimal dilutions/concentrations should be determined by the end user.
Conjugation:	Unconjugated
Immunogen:	The antiserum was produced against synthesized phosphopeptide derived from human Chk2 around the phosphorylation site of threonine 383 (M-R-TP-L-C).

Datasheet

Version: 3.0.0
Revision date: 04 Aug 2025



Isotype:	IgG
Form:	Liquid
Purification:	Purified from rabbit antiserum by affinity chromatography using epitope-specific immunogen.
Storage:	Aliquot and store at -20°C. Avoid repeated freeze/thaw cycles.
UniProt Primary AC:	O96017 (UniProt , ExPASy)
KEGG:	hsa:11200
String:	9606.ENSP00000372023
Enzyme Commission Number:	EC 2.7.11.1
Buffer:	PBS (without Mg^{2+} and Ca^{2+}), pH 7.4, 150 mM NaCl, 0.02% sodium azide, 50% glycerol.
Concentration:	1 mg/ml
Note:	THIS PRODUCT IS FOR RESEARCH USE ONLY. NOT FOR USE IN DIAGNOSTIC, THERAPEUTIC OR COSMETIC PROCEDURES. NOT FOR HUMAN OR ANIMAL CONSUMPTION.