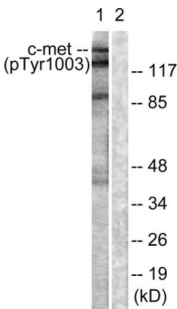
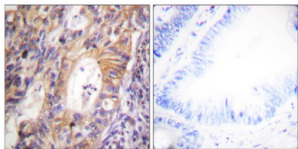


c-Met (Phospho-Tyr1003) Antibody

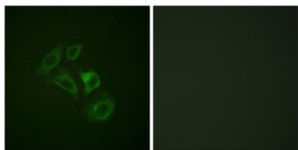
Catalogue No.:abx012477



Western blot analysis of extracts from HepG2 cells, using c-Met (Phospho-Tyr1003) antibody.



Immunohistochemistry analysis of paraffin-embedded human colon carcinoma tissue, using c-Met (Phospho-Tyr1003) antibody.



Immunofluorescence analysis of HepG2 cells, using c-Met (Phospho-Tyr1003) antibody.

Rabbit polyclonal antibody against c-Met protein. Immunogen region is Internal. Specificity is as follows for the reactive species: H:Y1003, M:Y1001, R:Y1004.

Target:	c-Met
Clonality:	Polyclonal
Reactivity:	Human, Mouse, Rat
Tested Applications:	ELISA, WB, IHC, IF/ICC
Host:	Rabbit
Recommended dilutions:	WB: 1/500 - 1/3000, IHC: 1/50 - 1/100, IF/ICC: 1/100 - 1/500, ELISA: 1/40000. Optimal dilutions/concentrations should be determined by the end user.

Datasheet

Version: 3.0.0
Revision date: 03 Jun 2025



Conjugation:	Unconjugated
Immunogen:	The antiserum was produced against synthesized phosphopeptide derived from human c-Met around the phosphorylation site of tyrosine 1003 (V-D-YP-R-A).
Isotype:	IgG
Form:	Liquid
Purification:	Purified from rabbit antiserum by affinity chromatography using epitope-specific immunogen.
Storage:	Aliquot and store at -20°C. Avoid repeated freeze/thaw cycles.
UniProt Primary AC:	P08581 (UniProt , ExPASy)
Enzyme Commission Number:	EC 2.7.10.1
Sequence:	CESVDYRATF
Buffer:	PBS (without Mg^{2+} and Ca^{2+}), pH 7.4, 150 mM NaCl, 0.02% sodium azide, 50% glycerol.
Concentration:	1 mg/ml
Note:	THIS PRODUCT IS FOR RESEARCH USE ONLY. NOT FOR USE IN DIAGNOSTIC, THERAPEUTIC OR COSMETIC PROCEDURES. NOT FOR HUMAN OR ANIMAL CONSUMPTION.