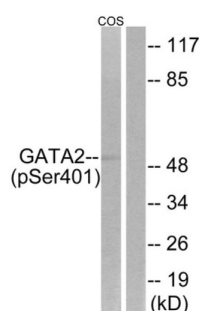


GATA2 (Phospho-Ser401) Antibody

Catalogue No.: abx012483



Western blot analysis of extracts from COS-7 cells, treated with TNF (20ng/ml, 5mins), using GATA2 (Phospho-Ser401) antibody.

Rabbit polyclonal antibody against GATA2 protein. Immunogen region is C-terminal. Specificity is as follows for the reactive species: H:S401.

Target:	GATA2
Clonality:	Polyclonal
Reactivity:	Human
Tested Applications:	ELISA, WB
Host:	Rabbit
Recommended dilutions:	WB: 1/500 - 1/3000, ELISA: 1/1000. Optimal dilutions/concentrations should be determined by the end user.
Conjugation:	Unconjugated
Immunogen:	The antiserum was produced against synthesized phosphopeptide derived from human GATA2 around the phosphorylation site of serine 401 (K-M-SP-N-K).
Isotype:	IgG
Form:	Liquid
Purification:	Purified from rabbit antiserum by affinity chromatography using epitope-specific immunogen.
Storage:	Aliquot and store at -20°C. Avoid repeated freeze/thaw cycles.
UniProt Primary AC:	P23769 (UniProt , ExPASy)
KEGG:	hsa:2624

Datasheet

Version: 3.0.0

Revision date: 26 Jun 2025



String: [9606.ENSF00000345681](#)

Buffer: PBS (without Mg^{2+} and Ca^{2+}), pH 7.4, 150 mM NaCl, 0.02% sodium azide, 50% glycerol.

Concentration: 1 mg/ml

Note: THIS PRODUCT IS FOR RESEARCH USE ONLY. NOT FOR USE IN DIAGNOSTIC, THERAPEUTIC OR COSMETIC PROCEDURES. NOT FOR HUMAN OR ANIMAL CONSUMPTION.

For Reference Only