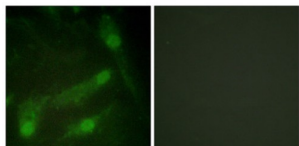


Mothers Against Decapentaplegic Homolog 2 Phospho-Thr220 (SMAD2 pT220) Antibody

Catalogue No.: abx012486



Immunofluorescence analysis of HeLa cells, using Smad2 (Phospho-Thr220) antibody.

Rabbit polyclonal antibody against Smad2 protein. Immunogen region is Internal. Specificity is as follows for the reactive species: H:T220, M:T220, R:T220.

Target:	Mothers Against Decapentaplegic Homolog 2 Phospho-Thr220 (SMAD2 pT220)
Clonality:	Polyclonal
Target Modification:	Thr220
Modification:	Phosphorylation
Reactivity:	Human, Mouse, Rat
Tested Applications:	ELISA, IF/ICC
Host:	Rabbit
Recommended dilutions:	IF/ICC: 1/100 - 1/500, ELISA: 1/1000. Optimal dilutions/concentrations should be determined by the end user.
Conjugation:	Unconjugated
Immunogen:	The antiserum was produced against synthesized phosphopeptide derived from human Smad2 around the phosphorylation site of threonine 220 (P-E-TP-P-P).
Isotype:	IgG
Form:	Liquid
Purification:	Purified from rabbit antiserum by affinity chromatography using epitope-specific immunogen.
Storage:	Aliquot and store at -20°C. Avoid repeated freeze/thaw cycles.

Datasheet

Version: 4.0.0

Revision date: 06 Sep 2025



UniProt Primary AC: Q15796 ([UniProt](#), [ExPASy](#))

KEGG: hsa:4087

String: [9606.ENSP00000262160](#)

Buffer: PBS (without Mg^{2+} and Ca^{2+}), pH 7.4, 150 mM NaCl, 0.02% sodium azide, 50% glycerol.

Concentration: 1 mg/ml

Note: THIS PRODUCT IS FOR RESEARCH USE ONLY. NOT FOR USE IN DIAGNOSTIC, THERAPEUTIC OR COSMETIC PROCEDURES. NOT FOR HUMAN OR ANIMAL CONSUMPTION.

For Reference Only