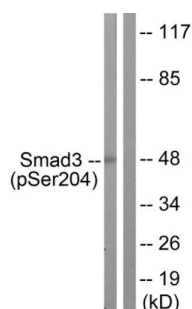


Mothers Against Decapentaplegic Homolog 3 (SMAD3) Antibody

Catalogue No.: abx012487



Western blot analysis of extracts from NIH/3T3 cells, treated with Serum (20%, 15mins), using Smad3 (Phospho-Ser204) antibody.

Rabbit polyclonal antibody against Smad3 protein. Immunogen region is Internal. Specificity is as follows for the reactive species: H:S204, M:S204, R:S204.

Target:	Mothers Against Decapentaplegic Homolog 3 (SMAD3)
Clonality:	Polyclonal
Reactivity:	Human, Mouse, Rat
Tested Applications:	ELISA, WB
Host:	Rabbit
Recommended dilutions:	WB: 1/500 - 1/3000, ELISA: 1/20000. Optimal dilutions/concentrations should be determined by the end user.
Conjugation:	Unconjugated
Immunogen:	The antiserum was produced against synthesized phosphopeptide derived from human Smad3 around the phosphorylation site of serine 204 (A-G-SP-P-N).
Isotype:	IgG
Form:	Liquid
Purification:	Purified from rabbit antiserum by affinity chromatography using epitope-specific immunogen.
Storage:	Aliquot and store at -20°C. Avoid repeated freeze/thaw cycles.
UniProt Primary AC:	P84022 (UniProt , ExPASy)
KEGG:	hsa:4088

Datasheet

Version: 3.0.0

Revision date: 18 Mar 2025



String: [9606.ENSF00000332973](#)

Buffer: PBS (without Mg^{2+} and Ca^{2+}), pH 7.4, 150 mM NaCl, 0.02% sodium azide, 50% glycerol.

Concentration: 1 mg/ml

Note: THIS PRODUCT IS FOR RESEARCH USE ONLY. NOT FOR USE IN DIAGNOSTIC, THERAPEUTIC OR COSMETIC PROCEDURES. NOT FOR HUMAN OR ANIMAL CONSUMPTION.

For Reference Only