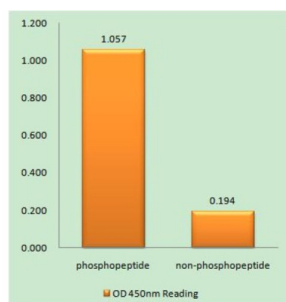
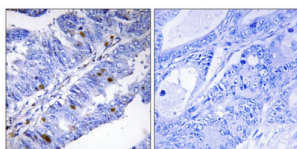


Nuclear Receptor NR4A1 (Phospho-Ser351) Antibody

Catalogue No.: abx012512



Nuclear Receptor NR4A1 (Phospho-Ser351) antibody reacts with epitope-specific phosphopeptide and corresponding non-phosphopeptide. The absorbance readings at 450 nM are shown in the ELISA figure.



Immunohistochemistry analysis of paraffin-embedded human colon carcinoma tissue using Nuclear Receptor NR4A1 (Phospho-Ser351) antibody.

Rabbit polyclonal antibody against Nuclear Receptor NR4A1 protein. Immunogen region is Internal. Specificity is as follows for the reactive species: H:S351, M:S354, R:S350.

Target: Nuclear Receptor NR4A1

Clonality: Polyclonal

Reactivity: Human, Mouse, Rat

Tested Applications: ELISA, IHC

Host: Rabbit

Recommended dilutions: IHC: 1/50 - 1/100, ELISA: 1/40000. Optimal dilutions/concentrations should be determined by the end user.

Conjugation: Unconjugated

Immunogen: The antiserum was produced against synthesized phosphopeptide derived from human Nuclear Receptor NR4A1 around the phosphorylation site of serine 351 (L-P-SP-K-P).

Isotype: IgG

Form: Liquid

Datasheet

Version: 3.0.0

Revision date: 22 Aug 2025



| | |
|----------------------------|--|
| Purification: | Purified from rabbit antiserum by affinity chromatography using epitope-specific immunogen. |
| Storage: | Aliquot and store at -20°C. Avoid repeated freeze/thaw cycles. |
| UniProt Primary AC: | P22736 (UniProt , ExPASy) |
| KEGG: | hsa:3164 |
| String: | 9606.ENSP00000440864 |
| Sequence: | CGRLPSKPKQ |
| Buffer: | PBS (without Mg^{2+} and Ca^{2+}), pH 7.4, 150 mM NaCl, 0.02% sodium azide, 50% glycerol. |
| Concentration: | 1 mg/ml |
| Note: | THIS PRODUCT IS FOR RESEARCH USE ONLY. NOT FOR USE IN DIAGNOSTIC, THERAPEUTIC OR COSMETIC PROCEDURES. NOT FOR HUMAN OR ANIMAL CONSUMPTION. |

For Reference Only