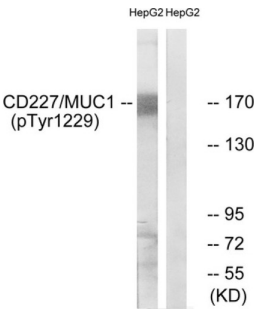
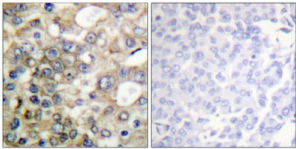


Mucin 1 Phospho-Tyr1229 (MUC1 pY1229) Antibody

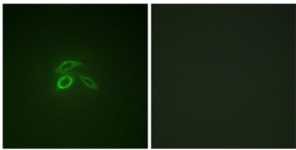
Catalogue No.: abx012517



Western blot analysis of extracts from HepG2 cells, treated with PMA (125 ng/ml, 30 mins), using CD227/MUC1 (Phospho-Tyr1229) antibody. The lane on the right is blocked with the phosphopeptide.



Immunohistochemistry analysis of paraffin-embedded human breast carcinoma tissue, using CD227/MUC1 (Phospho-Tyr1229) antibody. The picture on the right is blocked with the phosphopeptide.



Immunofluorescence analysis of HepG2 cells, using CD227/MUC1 (Phospho-Tyr1229) antibody. The picture on the right is blocked with the phosphopeptide.

Rabbit polyclonal antibody against CD227/MUC1 protein. Immunogen region is C-terminal. Specificity is as follows for the reactive species: H:Y1229.

Target: Mucin 1 Phospho-Tyr1229 (MUC1 pY1229)

Clonality: Polyclonal

Target Modification: Tyr1229

Modification: Phosphorylation

Reactivity: Human

Tested Applications: ELISA, WB, IHC, IF/ICC

Datasheet

Version: 4.0.0
Revision date: 23 Jun 2025



Host:	Rabbit
Recommended dilutions:	WB: 1/500 - 1/3000, IHC: 1/50 - 1/100, IF/ICC: 1/100 - 1/500, ELISA: 1/1000. Optimal dilutions/concentrations should be determined by the end user.
Conjugation:	Unconjugated
Immunogen:	The antiserum was produced against synthesized phosphopeptide derived from human CD227/MUC1 around the phosphorylation site of tyrosine 1229 (S-P-Y ^P -E-K).
Isotype:	IgG
Form:	Liquid
Purification:	Purified from rabbit antiserum by affinity chromatography using epitope-specific phosphopeptide. The antibody against non-phosphopeptide was removed by chromatography using non-phosphopeptide corresponding to the phosphorylation site.
Storage:	Aliquot and store at -20°C. Avoid repeated freeze/thaw cycles.
UniProt Primary AC:	P15941 (UniProt , ExPASy)
Gene Symbol:	MUC1
GeneID:	4582
OMIM:	113720
NCBI Accession:	NP_001018016.1, NM_001018016.2
HGNC:	7508
KEGG:	hsa:4582
Ensembl:	ENSG00000185499
String:	9606.ENSP00000484824
Sequence:	CDRSPYEKVS
Buffer:	PBS (without Mg ²⁺ and Ca ²⁺), pH 7.4, 150 mM NaCl, 0.02% sodium azide, 50% glycerol.
Specificity:	Detects endogenous levels of CD227/MUC1 only when phosphorylated at tyrosine 1229.
Concentration:	1 mg/ml

Datasheet

Version: 4.0.0

Revision date: 23 Jun 2025



Note:

THIS PRODUCT IS FOR RESEARCH USE ONLY. NOT FOR USE IN DIAGNOSTIC, THERAPEUTIC OR COSMETIC PROCEDURES. NOT FOR HUMAN OR ANIMAL CONSUMPTION.

For Reference Only