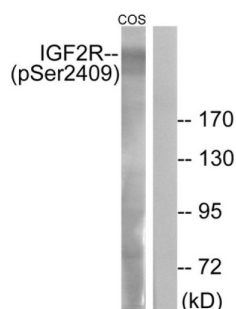
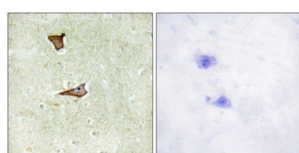


IGF2R (Phospho-Ser2409) Antibody

Catalogue No.: abx012519



Western blot analysis of extracts from COS-7 cells, treated with UV (15mins), using IGF2R (Phospho-Ser2409) antibody.



Immunohistochemistry analysis of paraffin-embedded human brain tissue using IGF2R (Phospho-Ser2409) antibody.

Rabbit polyclonal antibody against IGF2R protein. Immunogen region is C-terminal. Specificity is as follows for the reactive species: H:S2409, M:S2401.

Target: IGF2R

Clonality: Polyclonal

Reactivity: Human, Mouse

Tested Applications: ELISA, WB, IHC

Host: Rabbit

Recommended dilutions: WB: 1/500 - 1/3000, IHC: 1/50 - 1/100, ELISA: 1/10000. Optimal dilutions/concentrations should be determined by the end user.

Conjugation: Unconjugated

Immunogen: The antiserum was produced against synthesized phosphopeptide derived from human IGF2R around the phosphorylation site of serine 2409 (Q-D-SP-E-D).

Isotype: IgG

Form: Liquid

Datasheet

Version: 3.0.0
Revision date: 12 Sep 2025



Purification:	Purified from rabbit antiserum by affinity chromatography using epitope-specific immunogen.
Storage:	Aliquot and store at -20°C. Avoid repeated freeze/thaw cycles.
UniProt Primary AC:	P11717 (UniProt , ExPASy)
KEGG:	hsa:3482
String:	9606.ENSP00000349437
Sequence:	CDDQDSEDEV
Buffer:	PBS (without Mg^{2+} and Ca^{2+}), pH 7.4, 150 mM NaCl, 0.02% sodium azide, 50% glycerol.
Concentration:	1 mg/ml
Note:	THIS PRODUCT IS FOR RESEARCH USE ONLY. NOT FOR USE IN DIAGNOSTIC, THERAPEUTIC OR COSMETIC PROCEDURES. NOT FOR HUMAN OR ANIMAL CONSUMPTION.

For Reference Only