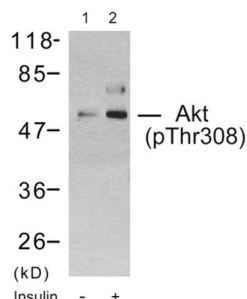
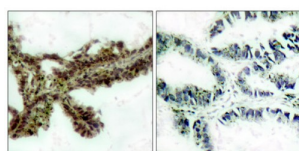


RAC-Alpha Serine/threonine-Protein Kinase Phospho-Thr308 (AKT1 pT308) Antibody

Catalogue No.: abx012525



Western blot analysis using Akt (Phospho-Thr308) Antibody. Line1: The extracts from 293 cells untreated; Line2: The extracts from 293 cells treated with insulin.



Immunohistochemical analysis of paraffin-embedded lung carcinoma, using Akt (Phospho-Thr308) Antibody. Left: Untreated; Right: Treated with synthesized phosphopeptide.

Rabbit polyclonal antibody against Akt protein. Immunogen region is Internal. Specificity is as follows for the reactive species: H:T308, M:T308, R:T308.

Target:	RAC-Alpha Serine/threonine-Protein Kinase Phospho-Thr308 (AKT1 pT308)
Clonality:	Polyclonal
Target Modification:	Thr308
Modification:	Phosphorylation
Reactivity:	Human, Mouse, Rat
Tested Applications:	ELISA, WB, IHC
Host:	Rabbit
Recommended dilutions:	WB: 1/500 - 1/3000, IHC: 1/50 - 1/100, ELISA: 1/10000. Optimal dilutions/concentrations should be determined by the end user.
Conjugation:	Unconjugated
Immunogen:	The antiserum was produced against synthesized phosphopeptide derived from human Akt around the phosphorylation site of Threonine 308 (M-K-TP-F-C).

Datasheet

Version: 3.0.0
Revision date: 22 Jun 2025



Isotype:	IgG
Form:	Liquid
Purification:	Purified from rabbit antiserum by affinity chromatography using epitope-specific immunogen.
Storage:	Aliquot and store at -20°C. Avoid repeated freeze/thaw cycles.
UniProt Primary AC:	P31749 (UniProt , ExPASy) P31751 (UniProt , ExPASy)
Enzyme Commission Number:	EC 2.7.11.1
Sequence:	DGATMKTFCGTPE
Buffer:	PBS (without Mg^{2+} and Ca^{2+}), pH 7.4, 150 mM NaCl, 0.02% sodium azide, 50% glycerol.
Concentration:	1 mg/ml
Note:	THIS PRODUCT IS FOR RESEARCH USE ONLY. NOT FOR USE IN DIAGNOSTIC, THERAPEUTIC OR COSMETIC PROCEDURES. NOT FOR HUMAN OR ANIMAL CONSUMPTION.

For Reference Only