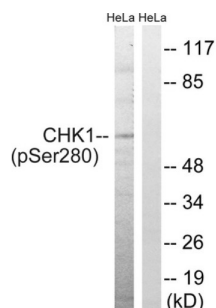


# Serine/Threonine-Protein Kinase CHK1 Phospho-Ser280 (CHEK1 pS280) Antibody

Catalogue No.: abx012528



Western blot analysis of extracts from HeLa cells, using CHK1 (phospho-Ser280) antibody.

Rabbit polyclonal antibody against CHK1 protein. Immunogen region is Internal. Specificity is as follows for the reactive species: H:S280.

<b>Target:</b>	Serine/Threonine-Protein Kinase CHK1 Phospho-Ser280 (CHEK1 pS280)
<b>Clonality:</b>	Polyclonal
<b>Target Modification:</b>	Ser280
<b>Modification:</b>	Phosphorylation
<b>Reactivity:</b>	Human
<b>Tested Applications:</b>	ELISA, WB
<b>Host:</b>	Rabbit
<b>Recommended dilutions:</b>	WB: 1/500 - 1/3000, ELISA: 1/20000. Optimal dilutions/concentrations should be determined by the end user.
<b>Conjugation:</b>	Unconjugated
<b>Immunogen:</b>	The antiserum was produced against synthesized phosphopeptide derived from human Chk1 around the phosphorylation site of serine 280 (V-T-SP-G-G).
<b>Isotype:</b>	IgG
<b>Form:</b>	Liquid
<b>Purification:</b>	Purified from rabbit antiserum by affinity chromatography using epitope-specific immunogen.
<b>Storage:</b>	Aliquot and store at -20°C. Avoid repeated freeze/thaw cycles.

# Datasheet

Version: 3.0.0

Revision date: 04 Aug 2025



**UniProt Primary AC:** O14757 ([UniProt](#), [ExPASy](#))

**KEGG:** hsa:1111

**String:** [9606.ENSP00000388648](#)

**Buffer:** PBS (without  $Mg^{2+}$  and  $Ca^{2+}$ ), pH 7.4, 150 mM NaCl, 0.02% sodium azide, 50% glycerol.

**Concentration:** 1 mg/ml

**Note:** THIS PRODUCT IS FOR RESEARCH USE ONLY. NOT FOR USE IN DIAGNOSTIC, THERAPEUTIC OR COSMETIC PROCEDURES. NOT FOR HUMAN OR ANIMAL CONSUMPTION.

For Reference Only