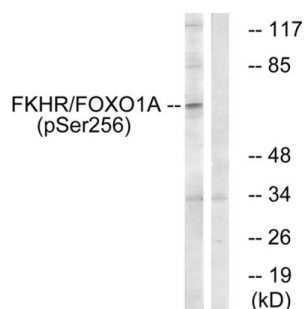
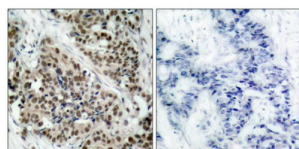


Forkhead Box Protein O1 Phospho-Ser256 (FOXO1 pS256) Antibody

Catalogue No.: abx012538



Western blot analysis of extracts from HeLa cells treated with EGF and Serum, using FKHR (phospho-Ser256) antibody.



Immunohistochemical analysis of paraffin-embedded human breast carcinoma tissue, using FKHR (phospho-Ser256) antibody.

Rabbit polyclonal antibody against FKHR protein. Immunogen region is Internal. Specificity is as follows for the reactive species: H:S256, M:S253, R:S250.

Target: Forkhead Box Protein O1 Phospho-Ser256 (FOXO1 pS256)

Clonality: Polyclonal

Target Modification: Ser256

Modification: Phosphorylation

Reactivity: Human, Mouse, Rat

Tested Applications: ELISA, WB, IHC

Host: Rabbit

Recommended dilutions: WB: 1/500 - 1/3000, IHC: 1/50 - 1/100, ELISA: 1/20000. Optimal dilutions/concentrations should be determined by the end user.

Conjugation: Unconjugated

Immunogen: The antiserum was produced against synthesized phosphopeptide derived from human FKHR around the phosphorylation site of serine 256 (A-A-SP-M-D).

Datasheet

Version: 3.0.0
Revision date: 30 Aug 2025



| | |
|---------------------|--|
| Isotype: | IgG |
| Form: | Liquid |
| Purification: | Purified from rabbit antiserum by affinity chromatography using epitope-specific immunogen. |
| Storage: | Aliquot and store at -20°C. Avoid repeated freeze/thaw cycles. |
| UniProt Primary AC: | Q12778 (UniProt , ExPASy) |
| KEGG: | hsa:2308 |
| String: | 9606.ENSP00000368880 |
| Sequence: | CPRRRAASMDNNSK |
| Buffer: | PBS (without Mg^{2+} and Ca^{2+}), pH 7.4, 150 mM NaCl, 0.02% sodium azide, 50% glycerol. |
| Concentration: | 1 mg/ml |
| Note: | THIS PRODUCT IS FOR RESEARCH USE ONLY. NOT FOR USE IN DIAGNOSTIC, THERAPEUTIC OR COSMETIC PROCEDURES. NOT FOR HUMAN OR ANIMAL CONSUMPTION. |

For Reference Only