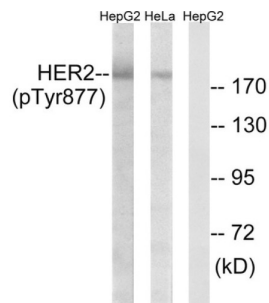
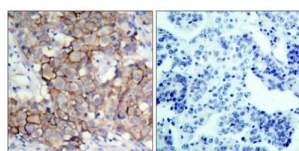


Receptor Tyrosine-Protein Kinase ErbB-2 Phospho-Tyr877 (ERBB2 pY877) Antibody

Catalogue No.: abx012543



Western blot analysis of extracts from HeLa cells and HepG2 cells, using HER2 (Phospho-Tyr877) Antibody.



Immunohistochemical analysis of paraffin-embedded breast carcinoma, using HER2 (Phospho-Tyr877) Antibody. Left: Untreated; Right: Treated with synthesized phosphopeptide.

Rabbit polyclonal antibody against HER2 protein. Immunogen region is Internal. Specificity is as follows for the reactive species: H:Y877, M:Y878, R:Y879.

Target: Receptor Tyrosine-Protein Kinase ErbB-2 Phospho-Tyr877 (ERBB2 pY877)

Clonality: Polyclonal

Target Modification: Tyr877

Modification: Phosphorylation

Reactivity: Human, Mouse, Rat

Tested Applications: ELISA, WB, IHC, IP

Host: Rabbit

Recommended dilutions: WB: 1/500 - 1/3000, IHC: 1/50 - 1/100, ELISA: 1/10000. Optimal dilutions/concentrations should be determined by the end user.

Conjugation: Unconjugated

Immunogen: The antiserum was produced against synthesized phosphopeptide derived from human HER2 around the phosphorylation site of Tyrosine 877 (T-E-YP-H-A).

Datasheet

Version: 2.0.0

Revision date: 25 Aug 2025



Isotype:	IgG
Form:	Liquid
Purification:	Purified from rabbit antiserum by affinity chromatography using epitope-specific immunogen.
Storage:	Aliquot and store at -20°C. Avoid repeated freeze/thaw cycles.
UniProt Primary AC:	P04626 (UniProt , ExPASy)
KEGG:	hsa:2064
String:	9606.ENSP00000269571
Sequence:	CDIDETEHADGGK
Buffer:	PBS (without Mg ²⁺ and Ca ²⁺), pH 7.4, 150 mM NaCl, 0.02% sodium azide, 50% glycerol.
Concentration:	1 mg/ml
Note:	THIS PRODUCT IS FOR RESEARCH USE ONLY. NOT FOR USE IN DIAGNOSTIC, THERAPEUTIC OR COSMETIC PROCEDURES. NOT FOR HUMAN OR ANIMAL CONSUMPTION.

For Reference Only