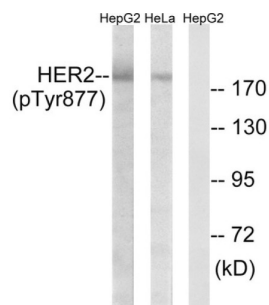
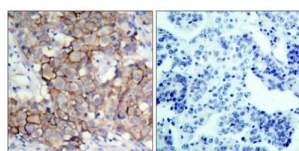


# Receptor Tyrosine-Protein Kinase ErbB-2 Phospho-Tyr877 (ERBB2 pY877) Antibody

Catalogue No.: abx012543



Western blot analysis of extracts from HeLa cells and HepG2 cells, using HER2 (Phospho-Tyr877) Antibody.



Immunohistochemical analysis of paraffin-embedded breast carcinoma, using HER2 (Phospho-Tyr877) Antibody. Left: Untreated; Right: Treated with synthesized phosphopeptide.

Rabbit polyclonal antibody against HER2 protein. Immunogen region is Internal. Specificity is as follows for the reactive species: H:Y877, M:Y878, R:Y879.

**Target:** Receptor Tyrosine-Protein Kinase ErbB-2 Phospho-Tyr877 (ERBB2 pY877)

**Clonality:** Polyclonal

**Target Modification:** Tyr877

**Modification:** Phosphorylation

**Reactivity:** Human, Mouse, Rat

**Tested Applications:** ELISA, WB, IHC, IP

**Host:** Rabbit

**Recommended dilutions:** WB: 1/500 - 1/3000, IHC: 1/50 - 1/100, ELISA: 1/10000. Optimal dilutions/concentrations should be determined by the end user.

**Conjugation:** Unconjugated

**Immunogen:** The antiserum was produced against synthesized phosphopeptide derived from human HER2 around the phosphorylation site of Tyrosine 877 (T-E-YP-H-A).

# Datasheet

Version: 2.0.0

Revision date: 28 Jun 2025



<b>Isotype:</b>	IgG
<b>Form:</b>	Liquid
<b>Purification:</b>	Purified from rabbit antiserum by affinity chromatography using epitope-specific immunogen.
<b>Storage:</b>	Aliquot and store at -20°C. Avoid repeated freeze/thaw cycles.
<b>UniProt Primary AC:</b>	P04626 ( <a href="#">UniProt</a> , <a href="#">ExPASy</a> )
<b>KEGG:</b>	hsa:2064
<b>String:</b>	<a href="#">9606.ENSP00000269571</a>
<b>Sequence:</b>	CDIDETEHADGGK
<b>Buffer:</b>	PBS (without $Mg^{2+}$ and $Ca^{2+}$ ), pH 7.4, 150 mM NaCl, 0.02% sodium azide, 50% glycerol.
<b>Concentration:</b>	1 mg/ml
<b>Note:</b>	THIS PRODUCT IS FOR RESEARCH USE ONLY. NOT FOR USE IN DIAGNOSTIC, THERAPEUTIC OR COSMETIC PROCEDURES. NOT FOR HUMAN OR ANIMAL CONSUMPTION.

For Reference Only