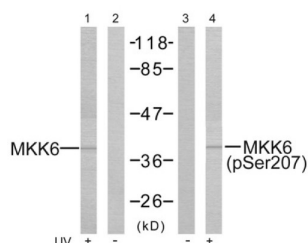
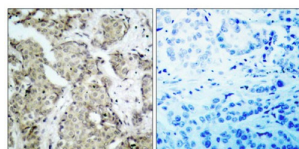


Mitogen-Activated Protein Kinase Kinase 3 Phospho-Ser189 (MAP2K3 pS189) Antibody

Catalogue No.: abx012552



Western blot analysis of the extracts from MDA-MB- 435 cells treated or untreated with UV using MKK3 (epitope around residue 207) Antibody (abx012552) and MKK6 (Phospho-Ser207) Antibody (abx0125523).



Immunohistochemical analysis of paraffin- embedded breast carcinoma, using MKK6 (Phospho- Ser207) Antibody. Left: Untreated; Right: Treated with synthesized phosphopeptide.

Rabbit polyclonal antibody against MKK3 protein. Immunogen region is Internal. Specificity is as follows for the reactive species: H:S218, M:S218, R:S218.

Target: Mitogen-Activated Protein Kinase Kinase 3 Phospho-Ser189 (MAP2K3 pS189)

Clonality: Polyclonal

Target Modification: Ser189

Modification: Phosphorylation

Reactivity: Human, Mouse, Rat

Tested Applications: ELISA, WB, IHC

Host: Rabbit

Recommended dilutions: WB: 1/500 - 1/3000, IHC: 1/50 - 1/100, ELISA: 1/5000. Optimal dilutions/concentrations should be determined by the end user.

Conjugation: Unconjugated

Immunogen: The antiserum was produced against synthesized phosphopeptide derived from human MKK6 around the phosphorylation site of Serine207 (V-D-SP-V-A).

Datasheet

Version: 3.0.0
Revision date: 24 Jun 2025



Isotype:	IgG
Form:	Liquid
Purification:	Purified from rabbit antiserum by affinity chromatography using epitope-specific immunogen.
Storage:	Aliquot and store at -20°C. Avoid repeated freeze/thaw cycles.
UniProt Primary AC:	P46734 (UniProt , ExPASy)
KEGG:	hsa:5606
String:	9606.ENSP00000345083
Sequence:	CSGYLVDSVAKTMD
Buffer:	PBS (without Mg^{2+} and Ca^{2+}), pH 7.4, 150 mM NaCl, 0.02% sodium azide, 50% glycerol.
Concentration:	1 mg/ml
Note:	THIS PRODUCT IS FOR RESEARCH USE ONLY. NOT FOR USE IN DIAGNOSTIC, THERAPEUTIC OR COSMETIC PROCEDURES. NOT FOR HUMAN OR ANIMAL CONSUMPTION.

For Reference Only